

36-11025: Monoclonal Antibody to Cytokeratin, Multi (Epithelial Marker)(Clone : KRT/457)(Discontinued)

Clonality :	Monoclonal
Clone Name :	KRT/457
Application :	FACS,IF,WB,IHC
Reactivity :	Human,Monkey,Bovine,Pig,Goat,Rat,Mouse,Guinea pig,Frog
Gene :	KRT6A
Gene ID :	3853
Uniprot ID :	P02538
Format :	Purified
Alternative Name :	KRT6A,K6A,KRT6D
Isotype :	Mouse IgG1
Immunogen Information :	KeRatin-enriched prepaRation from cultured human epithelial cells

Description

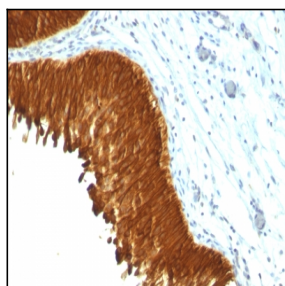
Twenty human keratins are resolved with two-dimensional gel electrophoresis into acidic (pI 6.0) subfamilies. This antibody recognizes acidic (Type I or LMW) and basic (Type II or HMW) cytokeratins, including 59kDa (CK4); 58kDa (CK5); 56kDa (CK6); 52kDa (CK8); 56.5kDa (CK10); 53kDa (CK13) and 45kDa (CK18). This is a broad-spectrum antibody, which has been reported to differentiate epithelial tumors from non-epithelial tumors. Many studies have shown the usefulness of keratins as markers in cancer research and tumor diagnosis.

Product Info

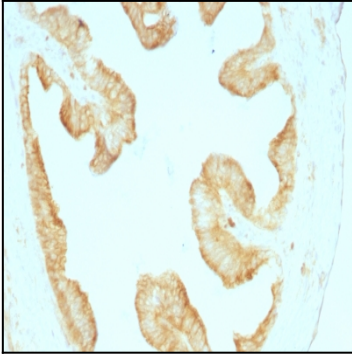
Amount :	100 µg
Purification :	Affinity Chromatography
Content :	100 µg in 500 µl PBS containing 0.05% BSA and 0.05% sodium azide. Sodium azide is highly toxic.
Storage condition :	Store the antibody at 4°C; stable for 6 months. For long-term storage; store at -20°C. Avoid repeated freeze and thaw cycles.

Application Note

Flow Cytometry (0.5-1.0 µg/million cells in 0.1ml); Immunofluorescence (0.5-1.0 µg/ml); Western Blot (0.5-1.0 µg/ml); Immunohistology (Formalin-fixed) (0.5-1.0 µg/ml for 30 min at RT) (Staining of formalin-fixed tissues requires boiling tissue sections in 10mM Citrate buffer, pH 6.0, for 10-20 min followed by cooling at RT for 20 minutes); Optimal dilution for a specific application should be determined.



Formalin-fixed, paraffin-embedded human Bladder Carcinoma stained with Multi Cytokeratin Monoclonal Antibody (KRT/457).



Formalin-fixed, paraffin-embedded Rat Oviduct stained with Multi Cytokeratin Monoclonal Antibody (KRT/457).