

## 36-11022: Monoclonal Antibody to HPV-16 (Human Papilloma Virus 16)(Clone : CAMVIR-1)

<b>Clonality :</b>	Monoclonal
<b>Clone Name :</b>	CAMVIR-1
<b>Application :</b>	IF,IHC
<b>Reactivity :</b>	Type 16 of human Papilloma Virus (HPV-16)
<b>Format :</b>	Purified
<b>Isotype :</b>	Mouse IgG2a, kappa
<b>Immunogen Information :</b>	Human papilloma virus type 16, major capsid protein L1

### Description

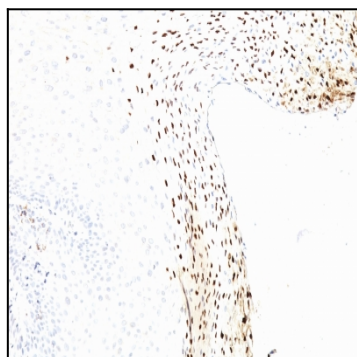
Reacts with a protein of 57kDa, identified as the L1 protein of human papilloma virus type 16 (HPV-16). It is the major capsid protein of HPV-16. Infection with specific types of HPV has been associated with an increased risk of developing cervical neoplasia. HPV types 6 and 11 have been associated with relatively benign diseases such as genital warts but types 16 and 18 are strongly associated with cervical, vaginal, and vulvar malignancies. The antibody reacts very strongly with formalin-fixed, paraffin-embedded tissues containing HPV-16 or -33; very weak reactions were occasionally observed with biopsy specimens or smears containing HPV-6 or HPV-11. It cross-reacts with HPV37.

### Product Info

<b>Amount :</b>	100 µg
<b>Purification :</b>	Affinity Chromatography
<b>Content :</b>	100 µg in 500 µl PBS containing 0.05% BSA and 0.05% sodium azide. Sodium azide is highly toxic.
<b>Storage condition :</b>	Store the antibody at 4°C; stable for 6 months. For long-term storage; store at -20°C. Avoid repeated freeze and thaw cycles.

### Application Note

Immunofluorescence (1-2ug/ml); Immunohistochemistry (Formalin-fixed) (1-2ug/ml for 30 minutes at RT)(Staining of formalin-fixed tissues requires heating tissue sections in 10mM Tris with 1mM EDTA, pH 9.0, for 45 min at 95°C followed by cooling at RT for 20 minutes);



Formalin-fixed, paraffin-embedded human Cervix stained with HPV-16 Monoclonal Antibody (CAMVIR-1)