

36-11019: Monoclonal Antibody to Bromodeoxyuridine (BrdU) (Proliferation Marker)(Clone : BRD469)

Clonality :	Monoclonal
Clone Name :	BRD469
Application :	IHC
Reactivity :	All species
Format :	Purified
Isotype :	Mouse IgG1, kappa
Immunogen Information :	Bromodeoxyuridine (BrdU) conjugated to KLH

Description

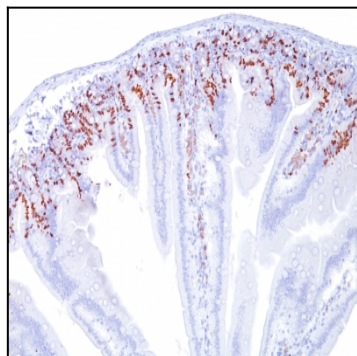
It reacts with Bromodeoxyuridine (BrdU) in single stranded DNA (produced by partial denaturation of double stranded DNA), BrdU coupled to a protein carrier, as well as free BrdU. BrdU is a thymidine analog, incorporated into cell nuclei during DNA synthesis prior to mitosis. Antibody to BrdU is helpful in detecting S-phase cells, providing useful information on the aggressiveness of tumors.

Product Info

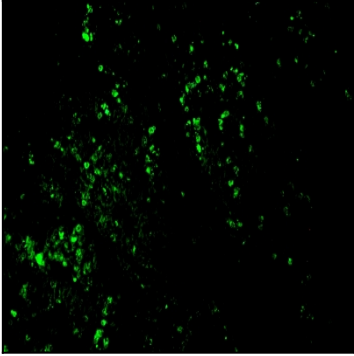
Amount :	100 µg
Purification :	Affinity Chromatography
Content :	100 µg in 500 µl PBS containing 0.05% BSA and 0.05% sodium azide. Sodium azide is highly toxic.
Storage condition :	Store the antibody at 4°C; stable for 6 months. For long-term storage; store at -20°C. Avoid repeated freeze and thaw cycles.

Application Note

Immunohistochemistry (Formalin-fixed) (1-2ug/ml for 30 minutes at RT) (Use Ab at 1ug/ml for 30 minute at RT)[For staining of formalin-fixed tissues, incubate sections in 4N HCl for 30 minutes at RT followed by digestion with trypsin at 1mg/ml PBS, 10 min at 37°C (Cat. #AP-9008)]



Formalin-fixed, paraffin-embedded Mouse Small Intestine stained with BrdU Monoclonal Antibody (BRD469).



Formalin-fixed, paraffin-embedded Rat Kidney stained with AF488 conjugate of BrdU Monoclonal Antibody (BRD469).