

36-11016: Monoclonal Antibody to Cytokeratin 5/8(Clone : SPM268)

Clonality :	Monoclonal
Clone Name :	SPM268
Application :	FACS,IF,WB,IHC
Reactivity :	Human, Mouse, Rat, Hamster
Gene :	KRT5
Gene ID :	3852
Uniprot ID :	P13647
Format :	Purified
Alternative Name :	KRT5
Isotype :	Mouse IgG1, kappa
Immunogen Information :	Cytoskeletal preparation from HeLa cells

Description

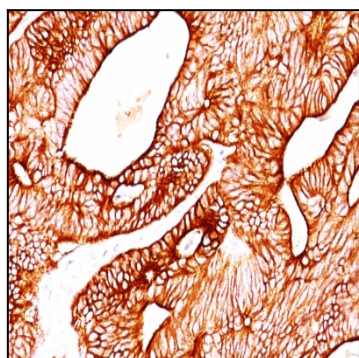
It reacts with keratin 5 (58kDa) and keratin 8 (52.5kDa). Simple epithelia express cytokeratin 8 in combination with 18. On the other hand, basal cells of stratified epithelia express cytokeratin 5 paired with 14. This antibody therefore, reacts with a wide range of epithelia and their carcinomas.

Product Info

Amount :	100 µg
Purification :	Affinity Chromatography
Content :	100 µg in 500 µl PBS containing 0.05% BSA and 0.05% sodium azide. Sodium azide is highly toxic.
Storage condition :	Store the antibody at 4°C; stable for 6 months. For long-term storage; store at -20°C. Avoid repeated freeze and thaw cycles.

Application Note

Flow Cytometry (1-2ug/million cells); Immunofluorescence (1-2ug/ml); Western Blot (1-2ug/ml); Immunohistochemistry (Formalin-fixed) (1-2ug/ml for 30 min at RT)(For staining of formalin-fixed tissues, digest sections with trypsin at 1mg/ml PBS, 15 min at RT)



Formalin-fixed, paraffin-embedded human Colon Carcinoma stained with Cytokeratin 5/8 Monoclonal Antibody (SPM268).