

36-11011: Monoclonal Antibody to Testosterone(Clone : 4E1G2)

Clonality :	Monoclonal
Clone Name :	4E1G2
Application :	ELISA, Radioimmunoassay, IHC
Reactivity :	All species
Format :	Purified
Isotype :	Mouse IgG1, kappa
Immunogen Information :	Testosterone 3 CMO conjugated to BSA

Description

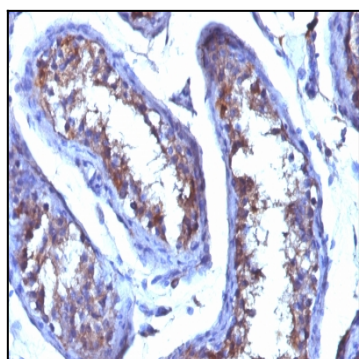
This MAb is highly specific to testosterone. Its affinity constant for testosterone is $\sim 10^{10} \text{M}^{-1}$. In competitive binding immunoassay, it reacts with testosterone 100%, 11-beta-hydroxy testosterone 3.3%, 17-alpha-methyl testosterone

Product Info

Amount :	100 μg
Purification :	Affinity Chromatography
Content :	100 μg in 500 μl PBS containing 0.05% BSA and 0.05% sodium azide. Sodium azide is highly toxic.
Storage condition :	Store the antibody at 4°C; stable for 6 months. For long-term storage; store at -20°C. Avoid repeated freeze and thaw cycles.

Application Note

ELISA (For coating, order Ab without BSA); Radioimmunoassay (RIA); Immunohistochemistry (Formalin-fixed) (0.25-0.5 $\mu\text{g}/\text{ml}$ for 30 minutes at RT) (Staining of formalin-fixed tissues requires heating tissue sections in 10mM Tris with 1mM EDTA, pH 9.0, for 45 min at 95°C followed by cooling at RT for 20 minutes);



Formalin-fixed. Paraffin-embedded human Testicular Carcinoma stained with Testosterone Monoclonal Antibody (4E1G2)