

36-11007: Monoclonal Antibody to Cytokeratin 10/13(Clone : DE-K13)

Clonality :	Monoclonal
Clone Name :	DE-K13
Application :	FACS,IF,WB,IHC
Reactivity :	Human
Gene :	KRT10
Gene ID :	3858
Uniprot ID :	P13645
Format :	Purified
Alternative Name :	KRT10,KPP
Isotype :	Mouse IgG2a, kappa
Immunogen Information :	Cytoskeletal preparation extracted from human ectocervical epithelium

Description

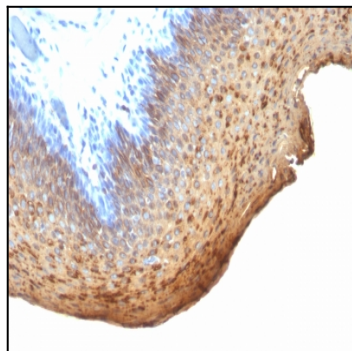
This antibody recognizes cytokeratin 10 (56.5kDa) and cytokeratin 13 (53kDa) in Western blotting. It recognizes only cytokeratin 13 in formalin-fixed, paraffin-embedded tissue sections. It does not react with cytokeratin 10 positive, cytokeratin 13 negative epithelia such as epidermis. However, on frozen sections this MAb serves as differentiation-related marker of all stratified epithelia; it stains all suprabasal cells in both cornifying and non-cornifying stratified epithelia and more differentiated cells of squamous carcinomas.

Product Info

Amount :	100 µg
Purification :	Affinity Chromatography
Content :	100 µg in 500 µl PBS containing 0.05% BSA and 0.05% sodium azide. Sodium azide is highly toxic.
Storage condition :	Store the antibody at 4°C; stable for 6 months. For long-term storage; store at -20°C. Avoid repeated freeze and thaw cycles.

Application Note

Flow Cytometry (1-2ug/million cells); Immunofluorescence (1-2ug/ml); Western Blot (1-2ug/ml); Immunohistochemistry (Formalin-fixed) (1-2ug/ml for 30 minutes at RT)(Staining of formalin-fixed tissues requires heating tissue sections in 10mM Tris with 1mM EDTA, pH 9.0, for 45 min at 95 °C followed by cooling at RT for 20 minutes)



Formalin-fixed, paraffin-embedded human Tonsil stained with Cytokeratin 10/13 Monoclonal Antibody (DE-K13)