

36-1990: Monoclonal Antibody to Major Vault Protein (MVP)(Clone : 1032)

Clonality :	Monoclonal
Clone Name :	1032
Application :	FACS,IF,IHC
Reactivity :	Human
Gene :	MVP
Gene ID :	9961
Uniprot ID :	Q14764
Format :	Purified
Alternative Name :	MVP,LRP
Isotype :	Mouse IgG1, kappa
Immunogen Information :	Proteins precipitated from human breast cancer MCF-7 cells

Description

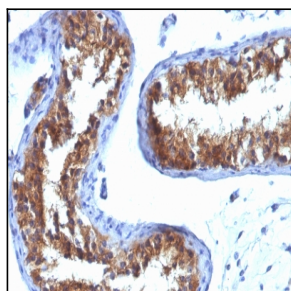
Recognizes a protein of 104kDa-110kDa, characterized as major vault protein (MVP). Vaults are large ribonucleoprotein particles (RNPs) present in all eukaryotic cells. They have a complex morphology, including several small molecules of RNA, but a single protein species. The MVP accounts for >70% of their mass. Their shape is reminiscent of the nucleopore central plug. Treatment of cells with estradiol increases the amount of MVP in nuclear extract. The hormone-dependent interaction of vaults with ER is prevented in vitro by sodium molybdate. Antibodies to estrogen, progesterone and glucocorticoid receptors are able to co-immunoprecipitate the MVP. MVP is overexpressed in many neoplastic tissues and cell lines. Expression of MVP predicts a poor response to chemotherapy.

Product Info

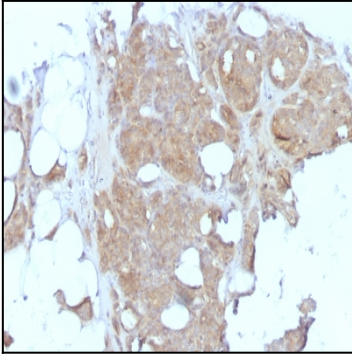
Amount :	100 µg
Purification :	Affinity Chromatography
Content :	100 µg in 500 µl PBS containing 0.05% BSA and 0.05% sodium azide. Sodium azide is highly toxic.
Storage condition :	Store the antibody at 4°C; stable for 6 months. For long-term storage; store at -20°C. Avoid repeated freeze and thaw cycles.

Application Note

Flow Cytometry (1-2ug/million cells); Immunofluorescence (1-2ug/ml); Immunohistochemistry (Formalin-fixed) (1-2ug/ml for 30 minutes at RT)(Staining of formalin-fixed tissues requires heating tissue sections in 1mM EDTA buffer, pH 7.5-8.5, for 45 min at 95°C followed by cooling at RT for 20 minutes)



Formalin-fixed, paraffin-embedded human Testicular Carcinoma stained with MVP Monoclonal Antibody (1032).



Formalin-fixed, paraffin-embedded human Breast Carcinoma stained with MVP Monoclonal Antibody (1032).