

## 36-1988: Monoclonal Antibody to Cdc20 (Cell Division Cycle Protein 20)(Clone : CDC20/1102)

<b>Clonality :</b>	Monoclonal
<b>Clone Name :</b>	CDC20/1102
<b>Application :</b>	IHC
<b>Reactivity :</b>	Human
<b>Gene :</b>	CDC20
<b>Gene ID :</b>	991
<b>Uniprot ID :</b>	Q12834
<b>Format :</b>	Purified
<b>Alternative Name :</b>	CDC20
<b>Isotype :</b>	Mouse IgG1, kappa
<b>Immunogen Information :</b>	Recombinant human Cdc20 protein

### Description

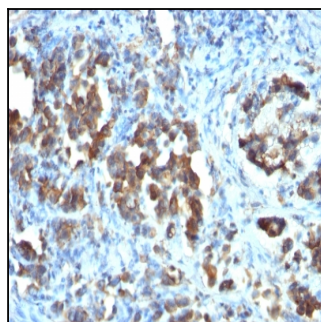
Cyclins, regulatory subunits, which associate with kinases, control many of the important steps in cell cycle progression. The Cdc2 protein kinase (p34Cdc2) exhibits protein kinase activity in vitro and exists in a complex with both cyclin B and a protein homologous to p13SUC1. Cdc2 kinase is the active subunit of the M phase promoting factor (MPF) and the M phase-specific Histone H1 kinase. The p34Cdc2/cyclin B complex is required for the G2 to M transition. An additional cell cycle-dependent protein kinase, termed p55cdc, exhibits a high degree of homology with the *S. cerevisiae* proteins Cdc20 and Cdc4. The p55cdc transcript is readily detectable in a variety of cultured cell lines in growth phase, but disappears when cell growth is chemically arrested.

### Product Info

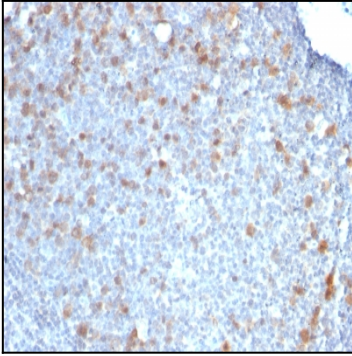
<b>Amount :</b>	100 µg
<b>Purification :</b>	Affinity Chromatography
<b>Content :</b>	100 µg in 500 µl PBS containing 0.05% BSA and 0.05% sodium azide. Sodium azide is highly toxic.
<b>Storage condition :</b>	Store the antibody at 4°C; stable for 6 months. For long-term storage; store at -20°C. Avoid repeated freeze and thaw cycles.

### Application Note

Immunohistochemistry (Formalin-fixed) (2-4ug/ml for 30 minutes at RT)(Staining of formalin-fixed tissues requires heating tissue sections in 10mM Tris with 1mM EDTA, pH 9.0, for 45 min at 95°C followed by cooling at RT for 20 minutes);



Formalin-fixed, paraffin-embedded human Gastric Carcinoma stained with CDC20 Monoclonal Antibody (CDC20/1102)



Formalin-fixed, paraffin-embedded human Tonsil stained with CDC20 Monoclonal Antibody (CDC20/1102)