

## 11-8072: Polyclonal Antibody to PER2

<b>Clonality :</b>	Polyclonal
<b>Application :</b>	WB
<b>Reactivity :</b>	Human
<b>Gene :</b>	PER2
<b>Gene ID :</b>	8864
<b>Uniprot ID :</b>	O15055
<b>Format :</b>	Purified
<b>Alternative Name :</b>	PER2,KIAA0347
<b>Isotype :</b>	Rabbit IgG
<b>Immunogen Information :</b>	A partial length recombinant PER2 protein (amino acids 700-900) was used as the immunogen for this antibody.

### Description

PER2 gene encodes the period circadian protein homolog 2 protein in humans. PER2 is a component of the circadian clock mechanism which is essential for generating circadian rhythms. Diseases associated with PER2 include advanced sleep phase syndrome and familial advanced sleep phase syndrome 1. PER2 is widely expressed in heart, brain, placenta, skeletal muscle, kidney and pancreas. It has two Isoform of 136 and 45 kDa.

### Product Info

<b>Amount :</b>	25 µg / 100 µg
<b>Purification :</b>	Protein A Chromatography
<b>Content :</b>	25 µg in 50 µl/100 µg in 200 µl PBS containing 0.05% BSA and 0.05% sodium azide. Sodium azide is highly toxic.
<b>Storage condition :</b>	Store the antibody at 4°C, stable for 6 months. For long-term storage, store at -20°C. Avoid repeated freeze and thaw cycles.

### Application Note

Western blot analysis: 2-4 µg/ml

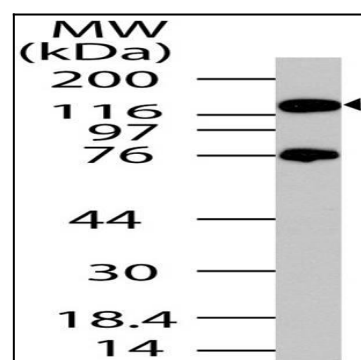


Fig-1: Western blot analysis of PER2. Anti-PER2 antibody (11-8072) was used at 2 µg/ml on Testis lysate.