

## 36-1908: Monoclonal Antibody to CD86 (Dendritic Cells Maturation Marker)(Clone : C86/1146)

<b>Clonality :</b>	Monoclonal
<b>Clone Name :</b>	C86/1146
<b>Application :</b>	IF, WB, IHC
<b>Reactivity :</b>	Human, Mouse, Rat
<b>Gene :</b>	CD86
<b>Gene ID :</b>	942
<b>Uniprot ID :</b>	P42081
<b>Format :</b>	Purified
<b>Alternative Name :</b>	CD86, Activation B7-2 antigen, B70, BU63, CTLA-4 counter-receptor B7.2, FUN-1
<b>Isotype :</b>	Mouse IgG1, kappa
<b>Immunogen Information :</b>	Recombinant human full-length CD86 protein

### Description

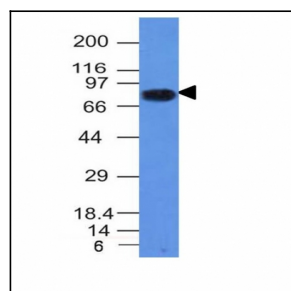
Recognizes a protein of 70kDa, which is identified as CD86. CD86 is a type I transmembrane glycoprotein and a member of the immunoglobulin superfamily of cell surface receptors. It is expressed at high levels on resting peripheral monocytes and dendritic cells and at very low density on resting B and T lymphocytes. CD86 expression is rapidly upregulated by B cell specific stimuli with peak expression at 18 to 42 hours after stimulation. CD86, along with CD80/B71, is an important accessory molecule in T cell co-stimulation via its interaction with CD28 and CD152/CTLA4. Since CD86 has rapid kinetics of induction, it is believed to be the major CD28 ligand expressed early in the immune response. It is also found on malignant Hodgkin and Reed Sternberg (HRS) cells in Hodgkin's disease.

### Product Info

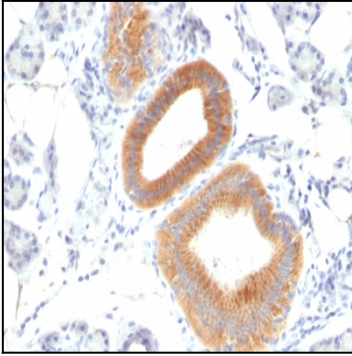
<b>Amount :</b>	100 µg
<b>Purification :</b>	Affinity Chromatography
<b>Content :</b>	100 µg in 500 µl PBS containing 0.05% BSA and 0.05% sodium azide. Sodium azide is highly toxic.
<b>Storage condition :</b>	Store the antibody at 4°C; stable for 6 months. For long-term storage; store at -20°C. Avoid repeated freeze and thaw cycles.

### Application Note

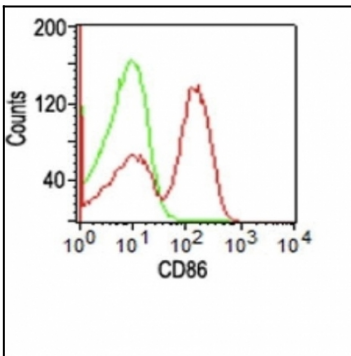
Immunofluorescence (1-2ug/ml); Western Blot (1-2ug/ml); Immunohistochemistry (Formalin-fixed) (2-4ug/ml for 30 minutes at RT)(Staining of formalin-fixed tissues requires heating tissue sections in 10mM Tris buffer with 1mM EDTA, pH 9.0, for 45 min at 95&degC followed by cooling at RT for 20 minutes)



Western Blot Analysis of Daudi Cell Lysate using CD86 Monoclonal Antibody (C86/1146).



Formalin-fixed, paraffin-embedded human Melanoma stained with CD86 Monoclonal Antibody (C86/1146).



Flow Cytometry of human PBMC's using CD86 Monoclonal Antibody (C86/1146).