

## 36-1860: Monoclonal Antibody to CD5 (Mantle Cell Lymphoma Marker)(C5/473 + CD5/54/F6)

<b>Clonality :</b>	Monoclonal
<b>Clone Name :</b>	C5/473 + CD5/54/F6
<b>Application :</b>	ELISA,IHC
<b>Reactivity :</b>	Human, Rat
<b>Gene :</b>	CD5
<b>Gene ID :</b>	921
<b>Uniprot ID :</b>	P06127
<b>Format :</b>	Purified
<b>Alternative Name :</b>	CD5,LEU1
<b>Isotype :</b>	Mouse IgG1, kappa + Mouse IgG1, kappa
<b>Immunogen Information :</b>	Human CD5 recombinant protein (C5/473); A synthetic peptide from the intracellular region of human CD5 (CD5/54/F6)

### Description

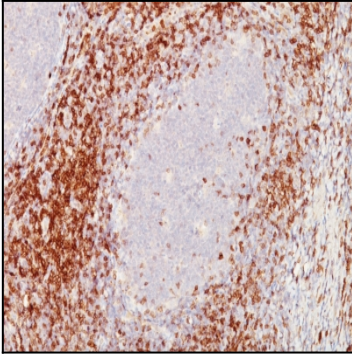
Recognizes a 67kDa transmembrane protein, which is identified as CD5. The CD5 antigen is found on 95% of thymocytes and 72% of peripheral blood lymphocytes. In lymph nodes, the main reactivity is observed in T cell areas. Anti-CD5 is a pan T-cell marker that also reacts with a range of neoplastic B-cells, e.g. chronic lymphocytic leukemia/small lymphocytic lymphoma (CLL/SLL), mantle cell lymphoma, and a subset (~10%) of diffuse large B-cell lymphoma. CD5 aberrant expression is useful in making a diagnosis of mature T-cell neoplasms. Anti-CD5 detection is diagnostic in CLL/SLL within a panel of other B-cell markers, especially one that includes anti-CD23. Anti-CD5 is also very useful in differentiating among mature small lymphoid cell malignancies. In addition, anti-CD5 can be used in distinguishing thymic carcinoma (+) from thymoma (-). Anti-CD5 does not react with granulocytes or monocytes.

### Product Info

<b>Amount :</b>	100 µg
<b>Purification :</b>	Affinity Chromatography
<b>Content :</b>	100 µg in 500 µl PBS containing 0.05% BSA and 0.05% sodium azide. Sodium azide is highly toxic.
<b>Storage condition :</b>	Store the antibody at 4°C; stable for 6 months. For long-term storage; store at -20°C. Avoid repeated freeze and thaw cycles.

### Application Note

ELISA (For coating use Ab at 1-2ug/ml order Ab without BSA); Immunohistochemistry (Formalin-fixed) (1-2ug/ml for 30 minutes at RT)(Staining of formalin-fixed tissues requires heating tissue sections in 1mM EDTA, pH 7.5-8.5, for 45 min at 95&degC followed by cooling at RT for 20 minutes)



Formalin-fixed, paraffin-embedded human Tonsil stained with CD5 Monoclonal Antibody (C5/473 + CD5/54/F6)