

## 11-3041: Polyclonal Antibody to TLR1

<b>Clonality :</b>	Polyclonal
<b>Application :</b>	WB
<b>Reactivity :</b>	Mouse,Human
<b>Gene :</b>	TLR1
<b>Gene ID :</b>	7096
<b>Uniprot ID :</b>	Q15399
<b>Format :</b>	Purified
<b>Alternative Name :</b>	TLR1,KIAA0012
<b>Isotype :</b>	Rabbit IgG
<b>Immunogen Information :</b>	A partial length recombinant TLR1 protein (amino acids 300-500) was used as the immunogen for this antibody.

### Description

Toll/interleukin-1 receptor-like protein (TLR1) is a member of the Toll-like receptor (TLR) family, which has close similarity to Drosophila Toll homologs. Toll receptors are involved in mediating dorsoventral polarization in the developing Drosophila embryo. TLR1 is a type I transmembrane receptor that characteristically contains an extracellular domain consisting of several leucine-rich regions along with a single cytoplasmic Toll/IL-1R-like domain. TLRs generally exist as homodimers, but TLR6 forms heterodimers with TLR2 and binds lipopeptide components of gram-positive and gram-negative bacterial cell walls. TLR1 is found to be involved in ocular toxoplasmosis and leprosy. It is highly expressed in spleen, ovary, peripheral blood leukocytes, thymus, and small intestine.

### Product Info

<b>Amount :</b>	25 µg / 100 µg
<b>Purification :</b>	Protein A Chromatography
<b>Content :</b>	25 µg in 50 µl/100 µg in 200 µl PBS containing 0.05% BSA and 0.05% sodium azide. Sodium azide is highly toxic.
<b>Storage condition :</b>	Store the antibody at 4°C, stable for 6 months. For long-term storage, store at -20°C. Avoid repeated freeze and thaw cycles.

### Application Note

Western blot analysis: 4-6 µg/ml

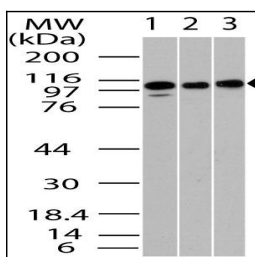


Fig-1: Western blot analysis of TLR1. Anti- TLR1 antibody (11-3041) was used at 4 µg/ml on (1) Jurkat, (2) EL4 and (3) Raji lysates.