

## 36-1842: Monoclonal Antibody to CD1b (T-Cell Surface Glycoprotein)(Clone : RIV12)

<b>Clonality :</b>	Monoclonal
<b>Clone Name :</b>	RIV12
<b>Application :</b>	ELISA,FACS,IF
<b>Reactivity :</b>	Human
<b>Gene :</b>	CD1B
<b>Gene ID :</b>	910
<b>Uniprot ID :</b>	P29016
<b>Format :</b>	Purified
<b>Alternative Name :</b>	CD1B
<b>Isotype :</b>	Mouse IgG1, kappa
<b>Immunogen Information :</b>	Human peripheral lymphocytes

### Description

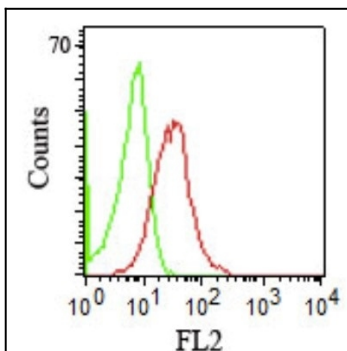
The mouse monoclonal antibody recognizes CD1b, a 44kDa type I glycoprotein associated with beta2-microglobulin. It is expressed on dendritic cells, Langerhans cells, thymocytes, and T acute lymphoblastic leukemia cells. The CD1 multigene family encodes five forms of the CD1 T-cell surface glycoprotein in human, designated CD1A, 1B, 1C, 1D and 1E. CD1, a type 1 membrane protein, has structural similarity to the MHC class I antigen and has been shown to present lipid antigens for recognition by T lymphocytes. Constitutive endocytosis of CD1B molecules and the differential sorting of MHC class II from lysosomes separate peptide- and lipid antigen-presenting molecules during dendritic cell maturation. CD1B is also expressed in interdigitating cells.

### Product Info

<b>Amount :</b>	100 µg
<b>Purification :</b>	Affinity Chromatography
<b>Content :</b>	100 µg in 500 µl PBS containing 0.05% BSA and 0.05% sodium azide. Sodium azide is highly toxic.
<b>Storage condition :</b>	Store the antibody at 4°C; stable for 6 months. For long-term storage; store at -20°C. Avoid repeated freeze and thaw cycles.

### Application Note

ELISA (For coating, order antibody without BSA); Flow Cytometry (1-2ug/million cells); Immunofluorescence (1-2ug/ml);



Flow Cytometry staining of human PBMC's using CD1b Monoclonal Antibody (RIV12).