

32-18600: Human CDH6(269-383) Protein, hFc Tag

Gene : CDH6
Uniprot ID : P55285
Alternative Name : CAD6; KCAD, Recombinant human CDH6(269-383) Protein with C-terminal human Fc tag

Description

This gene encodes a member of the cadherin superfamily. Cadherins are membrane glycoproteins that mediate homophilic cell-cell adhesion and play critical roles in cell differentiation and morphogenesis. The encoded protein is a type II cadherin and may play a role in kidney development as well as endometrium and placenta formation. Decreased expression of this gene may be associated with tumor growth and metastasis. [provided by RefSeq, May 2011]

Molecular Weight : The protein has a predicted molecular mass of 39.0 kDa after removal of the signal peptide.

Tag : C-Human Fc tag

Product Info

Amount : 50 μ g / 10 μ g
Purification : The purity of the protein is greater than 90% as determined by SDS-PAGE and Coomassie blue staining.
Content : Lyophilized from sterile PBS, pH 7.4. Normally 5 % - 8% trehalose is added as protectants before lyophilization. Please see Certificate of Analysis for specific instructions of reconstitution.
Storage condition : Store at -20°C to -80°C for 12 months in lyophilized form. After reconstitution, if not intended for use within a month, aliquot and store at -80°C (Avoid repeated freezing and thawing). Lyophilized proteins are shipped at ambient temperature.

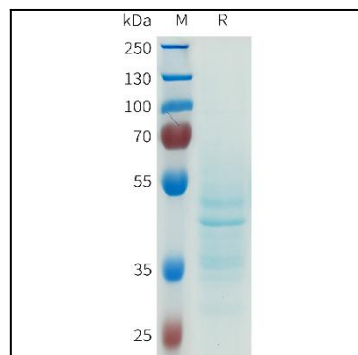


Figure 1. Human CDH6(269-383) Protein, hFc Tag on SDS-PAGE under reducing condition.