

36-1811: Monoclonal Antibody to Wilm's Tumor 1 (WT1) (Wilm's Tumor & Mesothelial Marker)(WT1/857 + 6F-H2)

Clonality :	Monoclonal
Clone Name :	WT1/857 + 6F-H2
Application :	IHC
Reactivity :	Human, Rat
Gene :	WT1
Gene ID :	7490
Uniprot ID :	P19544
Format :	Purified
Alternative Name :	WT1
Isotype :	Mouse IgG1, kappa + Mouse IgG1, kappa
Immunogen Information :	Recombinant full length human WT1 protein (WT1/857); Recombinant fragment aa1-181 of human WT1 (6F-H2)

Description

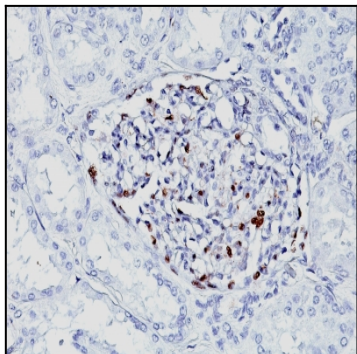
Recognizes a 47-55kDa-tumor suppressor protein, identified as Wilm's Tumor (WT1) protein. The antibody reacts with all isoforms of the full-length WT1 and also identifies WT1 lacking exon 2-encoded amino acids, frequently found in subsets of sporadic Wilm s tumors. WT1, a sporadic and familial pediatric kidney tumor, is genetically heterogeneous. Wilm s tumor is associated with mutations of WT1, a zinc-finger transcription factor that is essential for the development of the metanephric kidney and the urogenital system. The WT1 gene is normally expressed in fetal kidney and mesothelium, and its expression has been suggested as a marker for Wilm s tumor and mesothelioma. WT1 protein has been identified in proliferative mesothelial cells, malignant mesothelioma, ovarian carcinoma, gonadoblastoma, nephroblastoma, and desmoplastic small round cell tumor. Lung adenocarcinomas rarely stain positive with this antibody. WT1 protein expression in mesothelial cells has become a reliable marker for the diagnosis of mesotheliomas.

Product Info

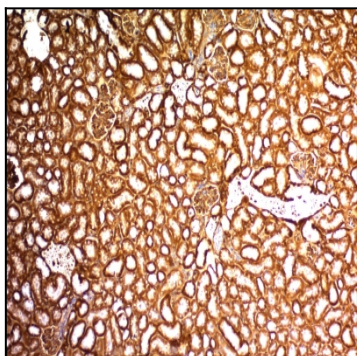
Amount :	100 µg
Purification :	Affinity Chromatography
Content :	100 µg in 500 µl PBS containing 0.05% BSA and 0.05% sodium azide. Sodium azide is highly toxic.
Storage condition :	Store the antibody at 4°C; stable for 6 months. For long-term storage; store at -20°C. Avoid repeated freeze and thaw cycles.

Application Note

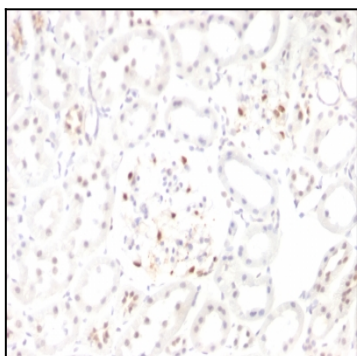
Immunohistochemistry (Formalin-fixed) (1-2ug/ml for 30 minutes at RT)(Staining of formalin-fixed tissues requires heating tissue sections in 10mM Tris with 1mM EDTA, pH 9.0, for 45 min at 95°C followed by cooling at RT for 20 minutes);



Formalin-fixed, paraffin-embedded Human Fetal Kidney stained with WT1 Monoclonal Antibody (WT1/857 + 6F-H2).



Formalin-fixed, paraffin-embedded Mouse Kidney stained with WT1 Monoclonal Antibody (WT1/857 + 6F-H2).



Formalin-fixed, paraffin-embedded Rat Kidney stained with WT1 Monoclonal Antibody (WT1/857 + 6F-H2).