

32-18567: Human NRG1 Beta1(20-242) Protein, mFc Tag

Gene : NRG1 Beta1
Uniprot ID : Q02297-6
Alternative Name : GGF; HGL; HRG; NDF; ARIA; GGF2; HRG1; HRGA; SMDF; MST131; MSTP131; NRG1-IT2, Recombinant human NRG1 Beta1(20-242) Protein with C-terminal mouse Fc tag

Description

The protein encoded by this gene is a membrane glycoprotein that mediates cell-cell signaling and plays a critical role in the growth and development of multiple organ systems. An extraordinary variety of different isoforms are produced from this gene through alternative promoter usage and splicing. These isoforms are expressed in a tissue-specific manner and differ significantly in their structure, and are classified as types I, II, III, IV, V and VI. Dysregulation of this gene has been linked to diseases such as cancer, schizophrenia, and bipolar disorder (BPD). [provided by RefSeq, Apr 2016]

Molecular Weight : The protein has a predicted molecular mass of 50.5 kDa after removal of the signal peptide. The apparent molecular mass of NRG1 Beta1(20-242)-mFc is approximately 55-70 kDa due to glycosylation.

Tag : C-Mouse Fc tag

Product Info

Amount : 50µg / 10µg
Purification : The purity of the protein is greater than 95% as determined by SDS-PAGE and Coomassie blue staining.
Content : Lyophilized from sterile PBS, pH 7.4. Normally 5 % - 8% trehalose is added as protectants before lyophilization. Please see Certificate of Analysis for specific instructions of reconstitution.
Storage condition : Store at -20°C to -80°C for 12 months in lyophilized form. After reconstitution, if not intended for use within a month, aliquot and store at -80°C (Avoid repeated freezing and thawing). Lyophilized proteins are shipped at ambient temperature.

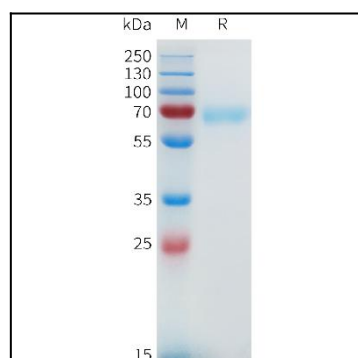


Figure 1. Human NRG1 Beta1(20-242) Protein, mFc Tag on SDS-PAGE under reducing condition.