

## 12-90025: Anti-CDH6(AMT-707 biosimilar) mAb

**Application :** ELISA  
**Reactivity :** Human  
**Gene :** CDH6  
**Uniprot ID :** P55285  
**Alternative Name :** CADH6;K-cadherin  
**Isotype :** IgG1(E239D, M241L)

### Description

Research grade biosimilar. Not for use in therapeutic or diagnostic procedures for humans or animals.

### Product Info

**Amount :** 50µg / 100µg  
**Content :** Lyophilized from sterile PBS, pH 7.4. Normally 5 % – 8% trehalose is added as protectants before lyophilization. Please see Certificate of Analysis for specific instructions of reconstitution.  
**Storage condition :** Store at -20°C to -80°C for 12 months in lyophilized form. After reconstitution, if not intended for use within a month, aliquot and store at -80°C (Avoid repeated freezing and thawing). Lyophilized antibodies are shipped at ambient temperature.

### Application Note

ELISA 1:5000-10000, Flow Cyt 1:100

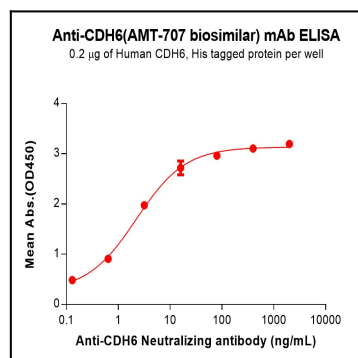


Figure 1. ELISA plate pre-coated by 2 µg/mL (100 µL/well) Human CDH6 Protein, His Tag can bind Anti-CDH6(AMT-707 biosimilar) mAb (12-90025) in a linear range of 0.13–16 ng/mL.

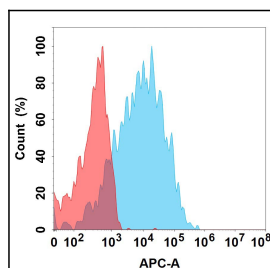


Figure 2. Flow cytometry analysis with 1µg/mL Anti-CDH6(AMT-707 biosimilar) mAb (12-90025) on Expi293 cells transfected with Human CDH6 protein (Blue histogram) or Expi293 transfected with irrelevant protein (Red histogram).