

12-90022: Anti-IL31RA(nemolizumab biosimilar) mAb

Application :	ELISA
Reactivity :	Human
Gene :	IL31RA
Uniprot ID :	Q8NI17
Alternative Name :	CRL; GPL; CRL3; GLMR; GLM-R; PLCA2; hGLM-R; IL-31RA; PRO21384; zcytoR17
Isotype :	IgG2(C14S,R16K,E20G,S21G,C102S,H147Q,R234Q,S257A,Q298E)

Description

Research grade biosimilar. Not for use in therapeutic or diagnostic procedures for humans or animals.

Product Info

Amount :	50µg / 100µg
Content :	Lyophilized from sterile PBS, pH 7.4. Normally 5 % - 8% trehalose is added as protectants before lyophilization. Please see Certificate of Analysis for specific instructions of reconstitution.
Storage condition :	Store at -20°C to -80°C for 12 months in lyophilized form. After reconstitution, if not intended for use within a month, aliquot and store at -80°C (Avoid repeated freezing and thawing). Lyophilized antibodies are shipped at ambient temperature.

Application Note

ELISA 1:5000-10000, Flow Cyt 1:100

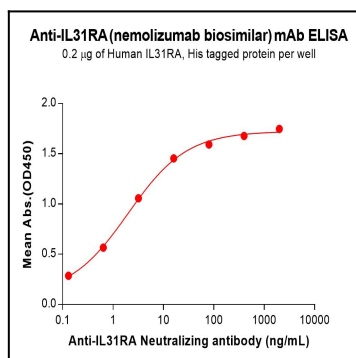


Figure 1. ELISA plate pre-coated by 2 µg/mL (100 µL/well) Human IL31RA Protein, His Tag can bind Anti-IL31RA(nemolizumab biosimilar) mAb (12-90022) in a linear range of 0.13-16 ng/mL.

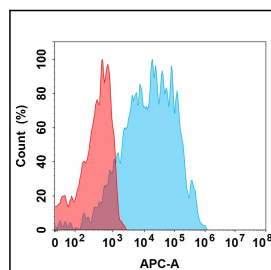


Figure 2. Flow cytometry analysis with 1µg/mL Anti-IL31RA(nemolizumab biosimilar) mAb (12-90022) on Expi293 cells transfected with Human IL31RA and OSMR protein (Blue histogram) or Expi293 transfected with Human OSMR protein (Red histogram).

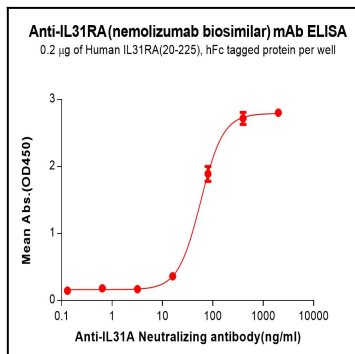


Figure 3. ELISA plate pre-coated by 2 µg/mL (100 µL/well) Human IL31RA(20-225) Protein, hFc Tag can bind Anti-IL31RA (nemolizumab biosimilar) mAb (12-90022) in a linear range of 16–400 ng/mL. In order to specifically detect 12-90022, mouse human Fab-specific antibody was used as detection antibody.

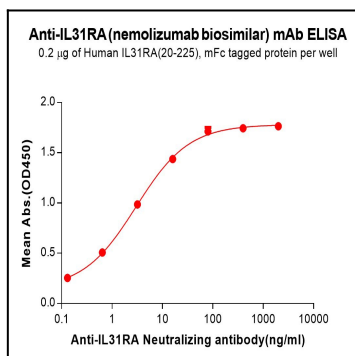


Figure 4. ELISA plate pre-coated by 2 µg/mL (100 µL/well) Human IL31RA(20-225) Protein, mFc Tag can bind Anti-IL31RA(nemolizumab biosimilar) mAb (12-90022) in a linear range of 0.13–16 ng/mL.