

## 12-9648: Anti-TROP2 antibody(17A11), Rabbit mAb

<b>Clonality :</b>	Monoclonal
<b>Clone Name :</b>	17A11
<b>Application :</b>	WB
<b>Reactivity :</b>	Human
<b>Gene :</b>	Trop2
<b>Uniprot ID :</b>	P09758
<b>Alternative Name :</b>	TACSTD2;GA733-1;M1S1;TROP2
<b>Isotype :</b>	Rabbit IgG

### Description

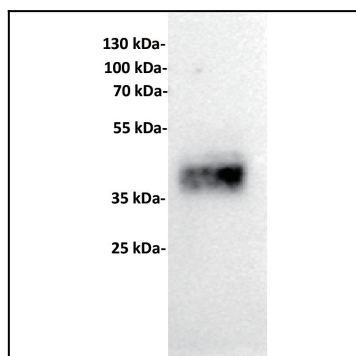
This intronless gene encodes a carcinoma-associated antigen. This antigen is a cell surface receptor that transduces calcium signals. Mutations of this gene have been associated with gelatinous drop-like corneal dystrophy.

### Product Info

<b>Amount :</b>	10 µg / 100 µg
<b>Purification :</b>	Purified from cell culture supernatant by affinity chromatography
<b>Content :</b>	Lyophilized from sterile PBS, pH 7.4. Normally 5 % - 8% trehalose is added as protectants before lyophilization. Please see Certificate of Analysis for specific instructions of reconstitution.
<b>Storage condition :</b>	Store at -20°C to -80°C for 12 months in lyophilized form. After reconstitution, if not intended for use within a month, aliquot and store at -80°C (Avoid repeated freezing and thawing). Lyophilized proteins are shipped at ambient temperature.

### Application Note

WB 1:1000



"Figure 1. Anti-Trop2 antibody (SKU# 12-9648) at 1/1000 dilution Lane : A431, whole cell lysate Secondary : Goat Anti-Rabbit IgG H&L (HRP) at 1/5000 dilution Predicted band size: 36 kDa Observed band size: 40 kDa"