

12-9641: Anti-SIGLEC15 antibody(4E12), IgG1 Chimeric mAb

| | |
|---------------------------|---|
| Clonality : | Monoclonal |
| Clone Name : | 4E12 |
| Reactivity : | Human |
| Gene : | SIGLEC15 |
| Uniprot ID : | Q6ZMC9 |
| Alternative Name : | CD33 antigen-like 3;SIGLEC-15;CD33L3;sialic acid-binding Ig-like lectin 15;Siglec15;Siglec-15 |
| Isotype : | Rabbit/Human Fc chimeric IgG1 |

Description

SIGLEC15 (Sialic Acid Binding Ig Like Lectin 15) is a Protein Coding gene. Diseases associated with SIGLEC15 include Osteoporosis;Juvenile and Osteoporosis. Among its related pathways are Innate Immune System and RET signaling. An important paralog of this gene is SIGLEC1.

Product Info

| | |
|----------------------------|---|
| Amount : | 10µg / 100 µg |
| Purification : | Purified from cell culture supernatant by affinity chromatography |
| Content : | Lyophilized from sterile PBS, pH 7.4. Normally 5 % – 8% trehalose is added as protectants before lyophilization. Please see Certificate of Analysis for specific instructions of reconstitution. |
| Storage condition : | Store at -20°C to -80°C for 12 months in lyophilized form. After reconstitution, if not intended for use within a month, aliquot and store at -80°C (Avoid repeated freezing and thawing). Lyophilized proteins are shipped at ambient temperature. |

Application Note

Flow Cyt 1/100

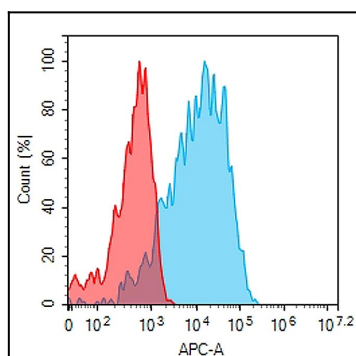


Figure 1. Flow cytometry analysis with 1µg/mL Anti-SIGLEC15 (4E12) mAb on Expi293 cells transfected with human SIGLEC15 (Blue histogram) or Expi293 transfected with irrelevant protein (Red histogram).