

## 12-9639: Anti-TYRO3 antibody(16A3), IgG1 Chimeric mAb

<b>Clonality :</b>	Monoclonal
<b>Clone Name :</b>	16A3
<b>Reactivity :</b>	Human
<b>Gene :</b>	TYRO3
<b>Uniprot ID :</b>	Q06418
<b>Alternative Name :</b>	BYK;Dtk;Etk-2;Rek;RSE;Sky;Tif
<b>Isotype :</b>	Rabbit/Human Fc chimeric IgG1

### Description

The gene is part of a 3-member transmembrane receptor kinase receptor family with a processed pseudogene distal on chromosome 15. The encoded protein is activated by the products of the growth arrest-specific gene 6 and protein S genes and is involved in controlling cell survival and proliferation, spermatogenesis, immunoregulation and phagocytosis. The encoded protein has also been identified as a cell entry factor for Ebola and Marburg viruses. [provided by RefSeq, May 2010]

### Product Info

<b>Amount :</b>	10µg / 100 µg
<b>Purification :</b>	Purified from cell culture supernatant by affinity chromatography
<b>Content :</b>	Lyophilized from sterile PBS, pH 7.4. Normally 5 % – 8% trehalose is added as protectants before lyophilization. Please see Certificate of Analysis for specific instructions of reconstitution.
<b>Storage condition :</b>	Store at -20°C to -80°C for 12 months in lyophilized form. After reconstitution, if not intended for use within a month, aliquot and store at -80°C (Avoid repeated freezing and thawing). Lyophilized proteins are shipped at ambient temperature.

### Application Note

Flow Cyt 1/100

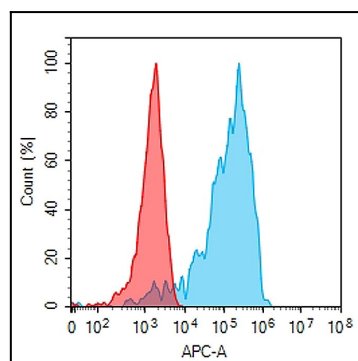


Figure 1. Flow cytometry analysis with 1µg/mL Anti-TYRO3 (16A3) mAb on Expi293 cells transfected with human TYRO3 (Blue histogram) or Expi293 transfected with irrelevant protein (Red histogram).