

12-9635: Anti-FGF21 antibody(19H8), IgG1 Chimeric mAb

Clonality :	Monoclonal
Clone Name :	19H8
Application :	ELISA
Reactivity :	Human
Gene :	FGF21
Uniprot ID :	Q9NSA1
Alternative Name :	Fibroblast growth factor 21;FGF-21
Isotype :	Rabbit/Human Fc chimeric IgG1

Description

This gene encodes a member of the fibroblast growth factor (FGF) family. FGF family members possess broad mitogenic and cell survival activities and are involved in a variety of biological processes. This protein is a secreted endocrine factor that functions as a major metabolic regulator. The encoded protein stimulates the uptake of glucose in adipose tissue. [provided by RefSeq, Mar 2016]

Product Info

Amount :	10µg / 100 µg
Purification :	Purified from cell culture supernatant by affinity chromatography
Content :	Lyophilized from sterile PBS, pH 7.4. Normally 5 % - 18% trehalose is added as protectants before lyophilization. Please see Certificate of Analysis for specific instructions of reconstitution.
Storage condition :	Store at -20°C to -80°C for 12 months in lyophilized form. After reconstitution, if not intended for use within a month, aliquot and store at -80°C(Avoid repeated freezing and thawing). Lyophilized proteins are shipped at ambient temperature.

Application Note

ELISA 1/5000-10000

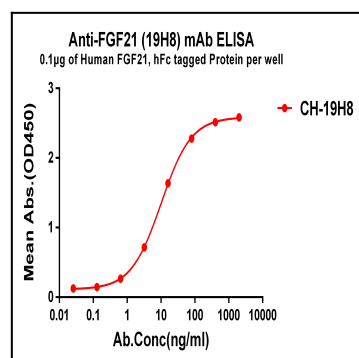


Figure 1. ELISA plate pre-coated by 1 µg/ml (100 µl/well) Human FGF21, hFc tagged protein can bind Rabbit anti-FGF21 monoclonal antibody(clone: 19H8) in a linear range of 10-100 ng/ml.