

## 12-9633: Anti-CD20 antibody(1F2), IgG1 Chimeric mAb

<b>Clonality :</b>	Monoclonal
<b>Clone Name :</b>	1F2
<b>Reactivity :</b>	Human
<b>Gene :</b>	CD20
<b>Uniprot ID :</b>	P11836
<b>Alternative Name :</b>	B1;Bp35;CD20;CVID5;LEU-16;MS4A2;S7
<b>Isotype :</b>	Rabbit/Human Fc chimeric IgG1

### Description

This gene encodes a member of the membrane-spanning 4A gene family. Members of this nascent protein family are characterized by common structural features and similar intron/exon splice boundaries and display unique expression patterns among hematopoietic cells and nonlymphoid tissues. This gene encodes a B-lymphocyte surface molecule which plays a role in the development and differentiation of B-cells into plasma cells. This family member is localized to 11q12, among a cluster of family members. Alternative splicing of this gene results in two transcript variants which encode the same protein.

### Product Info

<b>Amount :</b>	10µg / 100 µg
<b>Purification :</b>	Purified from cell culture supernatant by affinity chromatography
<b>Content :</b>	Lyophilized from sterile PBS, pH 7.4. Normally 5 % - 15% trehalose is added as protectants before lyophilization. Please see Certificate of Analysis for specific instructions of reconstitution.
<b>Storage condition :</b>	Store at -20°C to -80°C for 12 months in lyophilized form. After reconstitution, if not intended for use within a month, aliquot and store at -80°C(Avoid repeated freezing and thawing). Lyophilized proteins are shipped at ambient temperature.

### Application Note

Flow Cyt 1/100

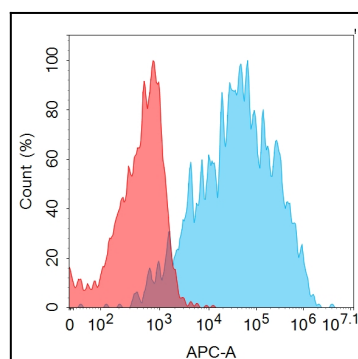


Figure 1. Flow cytometry analysis with 1µg/mL Anti-CD20 (1F2) mAb on Expi293 cells transfected with human CD20 (Blue histogram) or Expi293 transfected with irrelevant protein (Red histogram).