

12-9631: Anti-SEMA4D antibody(11G2), IgG1 Chimeric mAb

| | |
|---------------------------|----------------------------------------|
| Clonality : | Monoclonal |
| Clone Name : | 11G2 |
| Reactivity : | Human |
| Gene : | SEMA4D |
| Uniprot ID : | Q92854 |
| Alternative Name : | A8;BB18;GR3;CD100;C9orf164;CD100;SEMAJ |
| Isotype : | Rabbit/Human Fc chimeric IgG1 |

Description

Cell surface receptor for PLXNB1 and PLXNB2 that plays an important role in cell-cell signaling (PubMed:20877282). Regulates GABAergic synapse development (By similarity). Promotes the development of inhibitory synapses in a PLXNB1-dependent manner (By similarity). Modulates the complexity and arborization of developing neurites in hippocampal neurons by activating PLXNB1 and interaction with PLXNB1 mediates activation of RHOA (PubMed:19788569). Promotes the migration of cerebellar granule cells (PubMed:16055703). Plays a role in the immune system; induces B-cells to aggregate and improves their viability (in vitro) (PubMed:8876214). Induces endothelial cell migration through the activation of PTK2B/PYK2, SRC, and the phosphatidylinositol 3-kinase-AKT pathway (PubMed:16055703).[UniProtKB/Swiss-Prot Function]

Product Info

| | |
|----------------------------|----------------------------------------------------------------------------------------------------------------------------------------------------------------------------------------------------------------------------------------------------|
| Amount : | 10µg / 100 µg |
| Purification : | Purified from cell culture supernatant by affinity chromatography |
| Content : | Lyophilized from sterile PBS, pH 7.4. Normally 5 % - 12% trehalose is added as protectants before lyophilization. Please see Certificate of Analysis for specific instructions of reconstitution. |
| Storage condition : | Store at -20°C to -80°C for 12 months in lyophilized form. After reconstitution, if not intended for use within a month, aliquot and store at -80°C(Avoid repeated freezing and thawing). Lyophilized proteins are shipped at ambient temperature. |

Application Note

Flow Cyt 1/100

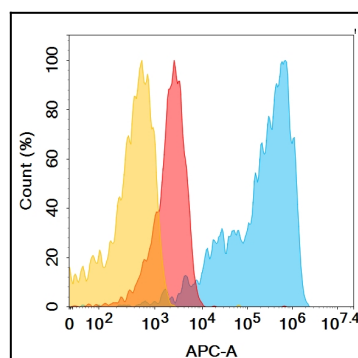


Figure 1. SEMA4D protein is expressed on the surface of Expi293 cell membrane. Flow cytometry analysis with 1µg/mL Anti-SEMA4D (11G2) mAb on Expi293 cells transfected with human SEMA4D (Blue histogram) or Expi293 transfected with irrelevant protein (Red histogram), and Isotype antibody on Expi293 transfected with irrelevant protein (Orange histogram).