

## 12-9624: Anti-PDL1 antibody(23D8), IgG1 Chimeric mAb

|                           |                                    |
|---------------------------|------------------------------------|
| <b>Clonality :</b>        | Monoclonal                         |
| <b>Clone Name :</b>       | 23D8                               |
| <b>Application :</b>      | WB                                 |
| <b>Reactivity :</b>       | Human                              |
| <b>Gene :</b>             | PDL1                               |
| <b>Uniprot ID :</b>       | Q9NZQ7                             |
| <b>Alternative Name :</b> | PD-L1;CD274;B7-H1;PDCD1L1;PDCD1LG1 |
| <b>Isotype :</b>          | Rabbit/Human Fc chimeric IgG1      |

### Description

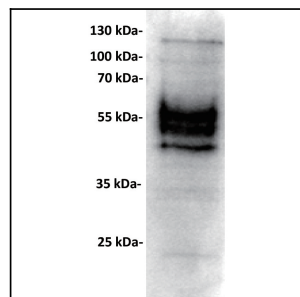
This gene encodes an immune inhibitory receptor ligand that is expressed by hematopoietic and non-hematopoietic cells, such as T cells and B cells and various types of tumor cells. The encoded protein is a type I transmembrane protein that has immunoglobulin V-like and C-like domains. Interaction of this ligand with its receptor inhibits T-cell activation and cytokine production. During infection or inflammation of normal tissue, this interaction is important for preventing autoimmunity by maintaining homeostasis of the immune response. In tumor microenvironments, this interaction provides an immune escape for tumor cells through cytotoxic T-cell inactivation. Expression of this gene in tumor cells is considered to be prognostic in many types of human malignancies, including colon cancer and renal cell carcinoma. Alternative splicing results in multiple transcript variants.

### Product Info

|                            |   |
|----------------------------|---|
| <b>Amount :</b>            | 10µg / 100 µg   |
| <b>Purification :</b>      | Purified from cell culture supernatant by affinity chromatography   |
| <b>Content :</b>           | Lyophilized from sterile PBS, pH 7.4. Normally 5 % - 8% trehalose is added as protectants before lyophilization. Please see Certificate of Analysis for specific instructions of reconstitution.  |
| <b>Storage condition :</b> | Store at -20°C to -80°C for 12 months in lyophilized form. After reconstitution, if not intended for use within a month, aliquot and store at -80°C (Avoid repeated freezing and thawing). Lyophilized proteins are shipped at ambient temperature. |

### Application Note

WB 1:1000



"Figure 1. Anti-PDL1 antibody (Cat# 12-9624) at 1/1000 dilution Lane : K562-PDL1, whole cell lysate Secondary : Goat Anti-Rabbit IgG H&L (HRP) at 1/5000 dilution Predicted band size: 33 kDa Observed band size: 40-60 kDa"