

## 12-9616: Anti-FOLR1 antibody(18A3), IgG1 Chimeric mAb

<b>Clonality :</b>	Monoclonal
<b>Clone Name :</b>	18A3
<b>Application :</b>	WB
<b>Reactivity :</b>	Human
<b>Gene :</b>	FOLR1
<b>Uniprot ID :</b>	P15328
<b>Alternative Name :</b>	FBP;FOLR;FRalpha
<b>Isotype :</b>	Rabbit/Human Fc chimeric IgG1

### Description

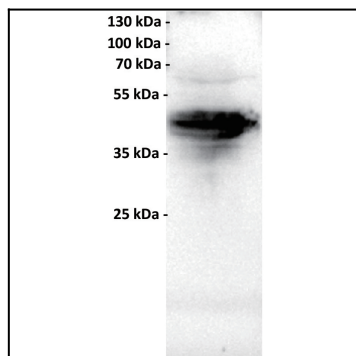
The protein encoded by this gene is a member of the folate receptor family. Members of this gene family bind folic acid and its reduced derivatives, and transport 5-methyltetrahydrofolate into cells. This gene product is a secreted protein that either anchors to membranes via a glycosyl-phosphatidylinositol linkage or exists in a soluble form. Mutations in this gene have been associated with neurodegeneration due to cerebral folate transport deficiency. Due to the presence of two promoters, multiple transcription start sites, and alternative splicing, multiple transcript variants encoding the same protein have been found for this gene.

### Product Info

<b>Amount :</b>	10µg / 100 µg
<b>Purification :</b>	Purified from cell culture supernatant by affinity chromatography
<b>Content :</b>	Lyophilized from sterile PBS, pH 7.4. Normally 5 % - 8% trehalose is added as protectants before lyophilization. Please see Certificate of Analysis for specific instructions of reconstitution.
<b>Storage condition :</b>	Store at -20°C to -80°C for 12 months in lyophilized form. After reconstitution, if not intended for use within a month, aliquot and store at -80°C (Avoid repeated freezing and thawing). Lyophilized proteins are shipped at ambient temperature.

### Application Note

WB 1:1000



"Figure 1. Anti-FOLR1 antibody (Cat# 12-9616) at 1/1000 dilution Lane : HeLa (human cervical adenocarcinoma epithelial cell), whole cell lysate Secondary : Goat Anti-Rabbit IgG H&L (HRP) at 1/5000 dilution band size: 38 kDa"

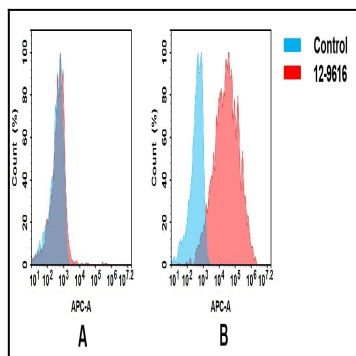


Figure 2. Flow cytometry analysis of antigen binding of anti-human FOLR1 mAb(12-9616). (A) 12-9616 does not bind to K562 cells that do not express FOLR1. (B) A clear peak shift of 12-9616 was seen compared to the control when incubated with FOLR1-expressing Hela cells, indicating strong binding of 12-9616 to FOLR1. Antibodies were incubated at 5  $\mu$ g/mL.