

## 12-9615: Anti-GUCY2C antibody(6E3), IgG1 Chimeric mAb

<b>Clonality :</b>	Monoclonal
<b>Clone Name :</b>	6E3
<b>Application :</b>	WB
<b>Reactivity :</b>	Human
<b>Gene :</b>	GUCY2C
<b>Uniprot ID :</b>	P25092
<b>Alternative Name :</b>	DIAR6;GC-C;GUC2C;MECIL;MUCIL;STAR
<b>Isotype :</b>	Rabbit/Human Fc chimeric IgG1

### Description

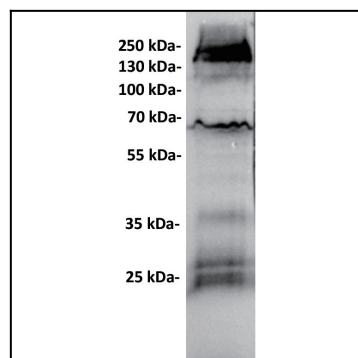
This gene encodes a transmembrane protein that functions as a receptor for endogenous peptides guanylin and uroguanylin, and the heat-stable E. coli enterotoxin. The encoded protein activates the cystic fibrosis transmembrane conductance regulator. Mutations in this gene are associated with familial diarrhea (autosomal dominant) and meconium ileus (autosomal recessive). [provided by RefSeq, Nov 2016]

### Product Info

<b>Amount :</b>	10µg / 100 µg
<b>Purification :</b>	Purified from cell culture supernatant by affinity chromatography
<b>Content :</b>	Lyophilized from sterile PBS, pH 7.4. Normally 5 % - 8% trehalose is added as protectants before lyophilization. Please see Certificate of Analysis for specific instructions of reconstitution.
<b>Storage condition :</b>	Store at -20°C to -80°C for 12 months in lyophilized form. After reconstitution, if not intended for use within a month, aliquot and store at -80°C (Avoid repeated freezing and thawing). Lyophilized proteins are shipped at ambient temperature.

### Application Note

WB 1:1000



"Figure 1. Anti-GUCY2C antibody (Cat# 12-9615) at 1/1000 dilution Lane : HT55, whole cell lysate Secondary : Goat Anti-Rabbit IgG H&L (HRP) at 1/5000 dilution Predicted band size: 123 kDa Observed band size: 150 kDa"