

## 36-1787: Monoclonal Antibody to SUMO-1(Clone : SUMO1/1188)

<b>Clonality :</b>	Monoclonal
<b>Clone Name :</b>	SUMO1/1188
<b>Application :</b>	FACS,IF,WB,IHC
<b>Reactivity :</b>	Human, Rat
<b>Gene :</b>	SUMO1
<b>Gene ID :</b>	7341
<b>Uniprot ID :</b>	P63165
<b>Format :</b>	Purified
<b>Alternative Name :</b>	SUMO1,SMT3C,SMT3H3,UBL1,OK/SW-cl.43
<b>Isotype :</b>	Mouse IgG1, kappa
<b>Immunogen Information :</b>	Recombinant human SUMO1 protein

### Description

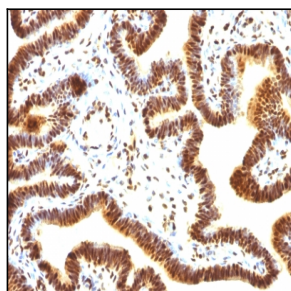
This MAb is specific to SUMO-1 and shows no cross-reaction with either SUMO-2 or SUMO-3. The small ubiquitin-related modifier (SUMO) proteins, which include SUMO-1, SUMO-2 and SUMO-3, belong to the ubiquitin-like protein family. Like ubiquitin, the SUMO proteins are synthesized as precursor proteins that undergo processing before conjugation to target proteins. Also, both utilize the E1, E2, and E3 cascade enzymes for conjugation. However, SUMO and ubiquitin differ with respect to targeting. Ubiquitination predominantly targets proteins for degradation, whereas sumoylation targets proteins to a variety of cellular processing, including nuclear transport, transcriptional regulation, apoptosis and protein stability. The unconjugated SUMO-1 protein localizes to the nuclear membrane.

### Product Info

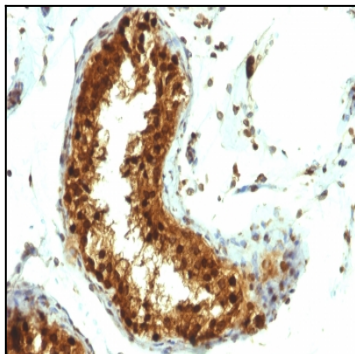
<b>Amount :</b>	100 µg
<b>Purification :</b>	Affinity Chromatography
<b>Content :</b>	100 µg in 500 µl PBS containing 0.05% BSA and 0.05% sodium azide. Sodium azide is highly toxic.
<b>Storage condition :</b>	Store the antibody at 4°C; stable for 6 months. For long-term storage; store at -20°C. Avoid repeated freeze and thaw cycles.

### Application Note

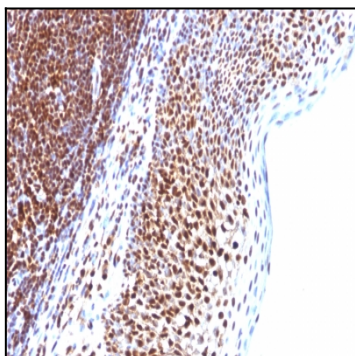
Flow Cytometry (1-2ug/million cells); Immunofluorescence (1-2ug/ml); Western Blot (1-2ug/ml); Immunohistochemistry (Formalin-fixed) (1-2ug/ml for 30 minutes at RT)(Staining of formalin-fixed tissues requires heating tissue sections in 10mM Tris with 1mM EDTA, pH 9.0, for 45 min at 95&degC followed by cooling at RT for 20 minutes);



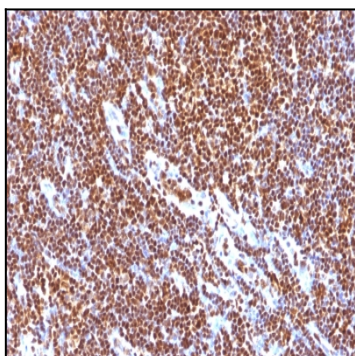
Formalin-fixed, paraffin-embedded human Ovarian Carcinoma stained with SUMO-1 Monoclonal Antibody (SUMO1/1188)



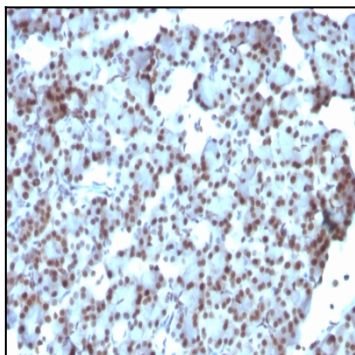
Formalin-fixed, paraffin-embedded human Testicular Carcinoma stained with SUMO-1 Monoclonal Antibody (SUMO1/1188)



Formalin-fixed, paraffin-embedded human Tonsil stained with SUMO-1 Monoclonal Antibody (SUMO1/1188)



Formalin-fixed, paraffin-embedded human Tonsil stained with SUMO-1 Monoclonal Antibody (SUMO1/1188)



Formalin-fixed, paraffin-embedded Rat Pancreas stained with SUMO-1 Monoclonal Antibody (SUMO1/1188)