

## 14-543ACL: CD70/CHO-K1 Stable Cell Line

**Application :** Functional Assay

### Description

CD70 Stable Cell Line is a stably transfected CHO-K1 cell line which expresses human Cluster of Differentiation 70 (CD70 also known as CD27 ligand, CD27L; Tumor necrosis factor ligand superfamily member 7, TNFSF7).

**Sequence data:** hCD70 (accession number NP\_001243)

```
MPEEGSGCSVRRRYPYGCVLRAALVPLVAGLVICLVVCIQRFAQA  
QQQLPLESLGWDVAELQLNHTGPQQDPRLYWQGGPALGRSFLHGPELDKQQLRIHRDG  
IYMVHIQVTLAICSSTTASRHHPTTLAVGICSPASRSISLLRSLFHQGCTIASQRLTP  
LARGDTLCTNLTGTLPSRNTDETFFGVQWVRP
```

### Product Info

**Amount :** 1 Vial  
**Content :** Each vial contains  $2 \sim 3 \times 10^6$  cells in 1 ml of 90% FBS + 10% DMSO  
**Storage condition :** Immediately upon receipt, store in liquid nitrogen.

### Application Note

#### Application:

- Screen for antibodies of human CD70 through Flow Cytometry.

#### Culture conditions:

Cells should be grown at 37°C with 5% CO<sub>2</sub> using DMEM medium (w/ L-Glutamine, 4.5g/L Glucose and Sodium Pyruvate) supplemented with 10% heat-inactivated FBS and 1% Pen/Strep, plus 10 µg/ml of Blasticidin.

It is recommended to quickly thaw the frozen cells upon receipt or from liquid nitrogen in a 37°C water-bath, transfer to a tube containing 10 ml of growth medium without Blasticidin, spin down cells, resuspend cells in pre-warmed growth medium without Blasticidin, transfer resuspended cells to T25 flask and culture in 37°C-CO<sub>2</sub> incubator.

Leave the T25 flask in the incubator for 1~2 days without disturbing or changing the medium until cells completely recover viability and become adherent. Once cells are over 90% adherent, remove growth medium and passage the cells through trypsinization and centrifugation. At first passage, switch to growth medium containing Blasticidin. Cells should be split before they reach complete confluence.

To passage the cells, detach cells from culture vessel with Trypsin/EDTA, add complete growth medium and transfer to a tube, spin down cells, resuspend cells and seed appropriate aliquots of cells suspension into new culture vessels. Subcultivation ration = 1:10 to 1:20 weekly. To achieve satisfactory results, cells should not be passaged over 16 times.

**LIMITED USE RESTRICTIONS:**

**THIS PRODUCT IS SOLELY FOR IN VITRO RESEARCH USE ONLY. NOT FOR DIAGNOSTIC OR THERAPEUTIC USE.**

By use of this product, user agrees to be bound by the terms of this limited use statement.

This product is solely for Internal Research Purposes and not for Commercial Purposes. Commercial Purposes include, but are not limited to (1) use of the cell line in manufacturing; (2) use of the cell line to provide a service, information or data; (3) use of the cell line for therapeutic, diagnostic or prophylactic purposes; or (4) resale of the cell line whether or not such cell lines are resold for use in research. The buyer cannot sell, give or otherwise transfer this product to a third party.

Commercial License Agreement is available for non-research use if applicable. Please contact Abeomics ([info@abeomics.com](mailto:info@abeomics.com)).

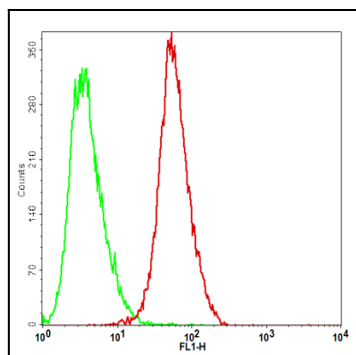


Fig-1: Detection of human CD70 in the CHO-K1/CD70 stable cell line. Parental CHO-K1 cells (Green); CHO-K1/CD70 cells (Red).