

## 14-542ACL: TLR10/HEK293 Stable Cell Line

**Application :** Functional Assay

### Description

TLR10/HEK293 Stable Cell Line is a stably transfected HEK293 cell line which expresses human Toll-like receptor 10 (TLR10, also designated as CD290). TLR10 is considered to be an orphan receptor with ligands and functions which are not well characterized. However, the genetic variation in TLR10 has been studied and proved to be related with the risk of developing autoimmune and inflammatory diseases such as rheumatoid arthritis, Crohn's disease and asthma. *Note that TLR10 in the TLR10/HEK293 stable cell line contains the N-terminal HA tag (Figure 1).*

**Sequence data:** Human TLR10 (accession number AAK26744)

```
MRLIRNIYFCSIVMTAEGDAPELPEERELMTNCSNMSLRKVPA
DLTPATTTLDLSYNLLFQLQSSDFHSVSKLRVLILCHNRIQQDLKTFEFNKELRYLD
LSNNRLKSVTWYLLAGLRYLDLSFNDFDTMPICEEAGNMSHLEILGLSGAKIQKSDFQ
KIAHLHLNNTVFLGFRTLPHYEEGSLPILNNTTKLHIVLPMDTNFVWLLRDGIKTSKILE
MTNIDGKSQFVSYEMQRNLSLENAKTSVLLLNKVDLLWDDLFLILQFVWHTSVEHFQI
RNVTFGGKAYLDHNSFDYSNTVMRTIKLEHVHFRVFIQQDKIYLLLTKMDIENLTIS
NAQMPHMLFPNYPTKFQYLNFNANNILTDELFKRTIQLPHLKTILNNGNKLETLSLVSC
FANNTPLEHLDLSQNLLOHKNDENCWPETVVMNLSYNKLSDSVFRCLPKSIQILD
NNNQIQTPKETIHLMALRELNIANFLTDLPGCSHFRLSVLNIEMNFILSPSLDFV
QSCQEVKTLNAGRNPFRCTCELKNFIQLETYSEVMMVGWSDSYTCEYPLNLRGIRLKD
VHLHELSCNTALLIVTIVVIMLVGLAVAFCCCLHFDLPWYLRMLGQCTQTWHRVRKTT
QEQLKRNVRFHAFISYSEHDSLWVKNELIPNLEKEDGSILICLYESYFDPGKSISENI
VSFIEKSYKSIFVLSPNFVQNEWCHYEFYFAHHNLFHENS DHIIILLEPIPFYCIPT
RYHKLKALLEKKAYLEWPKDRRCKGLFWANLRAAINVNVLATREMYELQTFTELNEES
RGSTISLMRTDCL
```

### Product Info

**Amount :** 1 Vial  
**Content :** Each vial contains  $2 \sim 3 \times 10^6$  cells in 1 ml of 90% FBS + 10% DMSO  
**Storage condition :** Immediately upon receipt, store in liquid nitrogen.

### Application Note

**Application:**

- Functional assay.

**Culture conditions:**

Cells should be grown at 37°C with 5% CO<sub>2</sub> using DMEM medium (w/ L-Glutamine, 4.5g/L Glucose and Sodium

Pyruvate) supplemented with 10% heat-inactivated FBS and 1% Pen/Strep, plus 10 µg/ml of Blasticidin.

It is recommended to quickly thaw the frozen cells upon receipt or from liquid nitrogen in a 37°C water-bath, transfer to a tube containing 10 ml of growth medium without Blasticidin, spin down cells, resuspend cells in pre-warmed growth medium without Blasticidin, transfer resuspended cells to T25 flask and culture in 37°C-CO<sub>2</sub> incubator.

Leave the T25 flask in the incubator for 1~2 days without disturbing or changing the medium until cells completely recover viability and become adherent. Once cells are over 90% adherent, remove growth medium and passage the cells through trypsinization and centrifugation. At first passage, switch to growth medium containing Blasticidin. Cells should be split before they reach complete confluence.

To passage the cells, detach cells from culture vessel with Trypsin/EDTA, add complete growth medium and transfer to a tube, spin down cells, resuspend cells and seed appropriate aliquots of cells suspension into new culture vessels. Subcultivation ration = 1:10 to 1:20 weekly. To achieve satisfactory results, cells should not be passaged over 16 times.

#### LIMITED USE RESTRICTIONS:

**THIS PRODUCT IS SOLELY FOR IN VITRO RESEARCH USE ONLY. NOT FOR DIAGNOSTIC OR THERAPEUTIC USE.**

**By use of this product, user agrees to be bound by the terms of this limited use statement.**

**This product is solely for Internal Research Purposes and not for Commercial Purposes. Commercial Purposes include, but are not limited to (1) use of the cell line in manufacturing; (2) use of the cell line to provide a service, information or data; (3) use of the cell line for therapeutic, diagnostic or prophylactic purposes; or (4) resale of the cell line whether or not such cell lines are resold for use in research. The buyer cannot sell, give or otherwise transfer this product to a third party.**

**Commercial License Agreement is available for non-research use if applicable. Please contact Abeomics ([info@abeomics.com](mailto:info@abeomics.com)).**

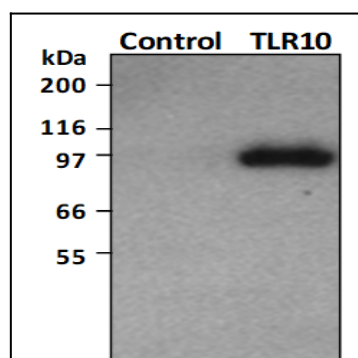


Fig-1: Western blot analysis of TLR10 expression in the TLR10/HEK293 cell line. Cell lysates were analyzed by SDS-PAGE followed by Western blotting using anti-HA antibody. Note that TLR10 in the TLR10/HEK293 stable cell line contains the N-terminal HA tag. Control, parental HEK293 cell lysate; TLR10, TLR10/HEK293 cell lysate.