

30-2792AC: APC Conjugated Anti-Human CD329 Monoclonal Antibody (Clone: K8)

Clonality :	Monoclonal
Clone Name :	K8
Application :	FACS
Reactivity :	Human
Conjugate :	APC
Gene :	SIGLEC9
Gene ID :	27180
Uniprot ID :	Q9Y336
Alternative Name :	sialic acid binding Ig like lectin 9, SIGLEC9
Isotype :	Mouse IgG1 kappa
Immunogen Information :	Recombinant CD329-Hu IgGfC fusion protein

Description

CD329 is a type I transmembrane glycoprotein of siglec family, which contains intracellular ITIM motif, and a SLAM-like motif, that acts as a docking site for SAP. CD329 can regulate TCR signaling by recruitment of SHP-1, which results in down-regulation of TCR-based gene transcription. It is expressed above all on monocytes, neutrophils, and a minor population of CD16+CD56- cells, weaker expression is detectable in some B cells, NK cells, and T cells.

Specificity: The mouse monoclonal antibody K8 recognizes an extracellular epitope of CD239, a type I transmembrane glycoprotein expressed above all on monocytes, neutrophils, and a minor population of CD16+CD56- cells.

Product Info

Amount :	100 tests
Purification :	Purified antibody is conjugated with activated allophycocyanin (APC) under optimum conditions and unconjugated antibody and free fluorochrome are removed by size-exclusion chromatography.
Content :	Stabilizing phosphate buffered saline (PBS), pH 7.4, 15 mM sodium azide
Storage condition :	Store at 2-8°C. Protect from prolonged exposure to light. Do not freeze.

Application Note

Flow cytometry: The reagent is designed for analysis of human blood cells using 10 µl reagent / 100 µl of whole blood or 10⁶ cells in a suspension. The content of a vial (1 ml) is sufficient for 100 tests.

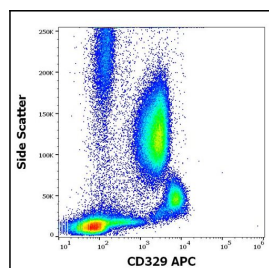


Figure 1: Flow cytometry surface staining pattern of human peripheral whole blood stained using anti-human CD329 (K8) APC antibody (10 µl reagent / 100 µl of peripheral whole blood).

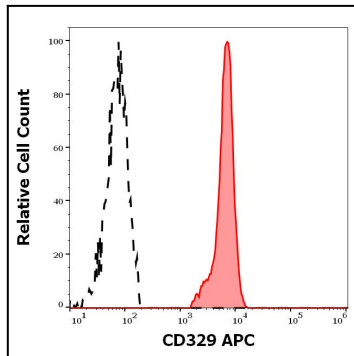


Figure 2: Separation of human monocytes (red-filled) from CD329 negative lymphocytes (black-dashed) in flow cytometry analysis (surface staining) of human peripheral whole blood stained using anti-human CD329 (K8) APC antibody (10 μ l reagent / 100 μ l of peripheral whole blood).