

30-2930AF-488: Alexa Fluor® 488 Conjugated Anti-alpha-Tubulin Monoclonal Antibody (Clone: YOL1/34)

| | |
|--------------------------------|---------------|
| Clonality : | Monoclonal |
| Clone Name : | YOL1/34 |
| Application : | IHC,FACS,WB |
| Gene ID : | 7277 |
| Uniprot ID : | Q71U36 |
| Format : | Purified |
| Alternative Name : | TUBA |
| Isotype : | Rat IgG2a |
| Immunogen Information : | Yeast tubulin |

Description

The rat monoclonal antibody YOL1/34 recognizes an epitope of alpha-tubulin localized between amino acids 414-422. It has higher affinity for fixed microtubules than for native ones.

Product Info

| | |
|----------------------------|----------------------------------------------------------------------------------------------------------------------------------------------------------------------------------------|
| Amount : | 0.1 mg |
| Purification : | Purified antibody is conjugated with Alexa Fluor® 488 NHS ester under optimum conditions and unconjugated antibody and free fluorochrome are removed by size-exclusion chromatography. |
| Content : | 0.1mg/ml, Phosphate buffered saline (PBS), pH 7.4, 15 mM sodium azide |
| Storage condition : | Store at 2-8°C protected from light. Do not freeze. |

Application Note

Immunocytochemistry: Recommended dilution: 2-10 µg/ml

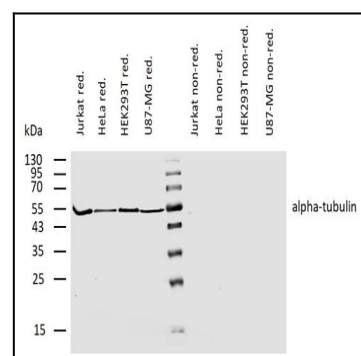


Figure 1: Immunocytochemistry staining of alpha tubulin in HeLa cells by mouse monoclonal antibody YOL1/34 conjugated with Alexa Fluor 488 (4 µg/ml; green).