

30-1207PE-Cy5: PE-Cy5 Conjugated Anti-IgE Monoclonal Antibody (Clone:BE5)

| | |
|--------------------------------|---------------------|
| Clonality : | Monoclonal |
| Clone Name : | BE5 |
| Application : | FACS |
| Reactivity : | Human |
| Conjugate : | R-PE/CY5 |
| Gene : | IgE |
| Alternative Name : | Immunoglobulin E |
| Isotype : | Mouse IgG1 |
| Immunogen Information : | Purified human IgE. |

Description

Immunoglobulin E (IgE) is a 180 kDa soluble protein serving as an antigen-specific unit of mast cell effector mechanisms. IgE has the lowest serum concentration of all immunoglobulins (approximately 0.5 mg/l) in healthy individuals, but upon allergen challenge its concentration in blood increases dramatically. Although biological survival of free IgE is very short ($T_{1/2} = 2$ days), it is stabilized after binding to its high affinity receptor. Unlike IgM- IgG- and IgA-committed B cells, IgE-switched B cells do not undergo clonal expansion.

Specificity: The antibody BE5 reacts with human IgE; it recognizes an epitope different from the ones recognized by 4G7 and 4H10 antibodies to IgE.

Product Info

| | |
|----------------------------|---|
| Amount : | 0.1 mg |
| Purification : | Purified antibody is conjugated with activated tandem dye of R-phycoerythrin-cyanine 5 (PE-Cy™5) under optimum conditions and unconjugated antibody and free fluorochrome are removed by size-exclusion chromatography. |
| Content : | Formulation: Stabilizing phosphate buffered saline (PBS), pH 7.4, 15 mM sodium azide |
| Storage condition : | Store at 2-8°C. Protect from prolonged exposure to light. Do not freeze. |

Application Note

Flow cytometry: Recommended dilution: 2-5 µg/ml.

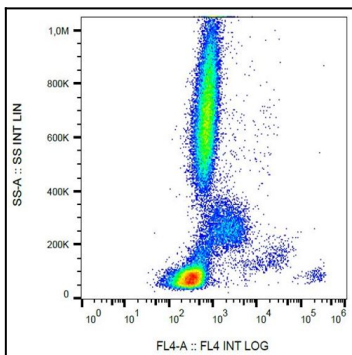


Figure 1: Flow cytometry analysis (surface staining) of IgE in human peripheral blood with anti-IgE (BE5) PE-Cy5.