

30-1207AC: APC Conjugated Anti-IgE Monoclonal Antibody (Clone:BE5)

Clonality :	Monoclonal
Clone Name :	BE5
Application :	FACS
Reactivity :	Human
Conjugate :	APC
Gene :	IgE
Alternative Name :	Immunoglobulin E
Isotype :	Mouse IgG1
Immunogen Information :	Purified human IgE.

Description

Immunoglobulin E (IgE) is a 180 kDa soluble protein serving as an antigen-specific unit of mast cell effector mechanisms. IgE has the lowest serum concentration of all immunoglobulins (approximately 0.5 mg/l) in healthy individuals, but upon allergen challenge its concentration in blood increases dramatically. Although biological survival of free IgE is very short ($T_{1/2} = 2$ days), it is stabilized after binding to its high affinity receptor. Unlike IgM- IgG- and IgA-committed B cells, IgE-switched B cells do not undergo clonal expansion.

Specificity: The antibody BE5 reacts with human IgE; it recognizes an epitope different from the ones recognized by 4G7 and 4H10 antibodies to IgE.

Product Info

Amount :	0.1 mg
Purification :	Purified antibody is conjugated with activated allophycocyanin (APC) under optimum conditions and unconjugated antibody and free fluorochrome are removed by size-exclusion chromatography.
Content :	0.1mg/ml, Formulation: Stabilizing phosphate buffered saline (PBS), pH 7.4, 15 mM sodium azide
Storage condition :	Store at 2-8°C. Protect from prolonged exposure to light. Do not freeze.

Application Note

Flow cytometry: Recommended dilution: 2-5 $\mu\text{g/ml}$.

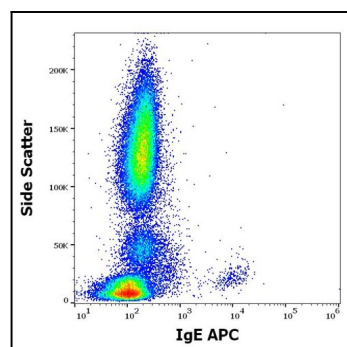


Figure 1: Flow cytometry surface staining pattern of human peripheral whole blood stained using anti-human IgE (BE5) APC antibody (10 μl reagent / 100 μl of peripheral whole blood).

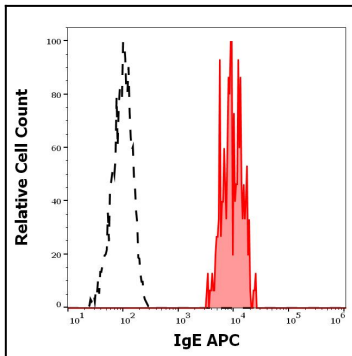


Figure 2: Separation of human IgE positive basophils (red-filled) from lymphocytes (black-dashed) in flow cytometry analysis (surface staining) of human peripheral whole blood stained using anti-human IgE (BE5) APC antibody (10 μ l reagent / 100 μ l of peripheral whole blood).