

30-2925PE: PE Conjugated Anti-Human CD226 Mab(Clone:11A8)

Clonality :	Monoclonal
Clone Name :	11A8
Application :	FACS
Reactivity :	Human,Non-Human Primates
Conjugate :	PE
Gene :	CD226
Gene ID :	10666
Uniprot ID :	Q15762
Alternative Name :	DNAM1, PTA1, TLISA1
Isotype :	Mouse IgG1 kappa

Description

CD226 is a type I transmembrane glycoprotein, which is expressed after activation on NK cells, platelets, monocytes, and some T cells. Its expression is increased in patients suffering from some autoimmune diseases or viral infections. CD226 is being phosphorylated on its cytoplasmic tail and interacts with LFA-1 complex (CD11a/CD18), resulting in calcium-independent intercellular contacts. Ligands for CD226 are CD155 and CD112.

Product Info

Amount :	100 Tests
Purification :	Purified antibody is conjugated with R-phycoerythrin (PE) under optimum conditions. Unconjugated antibody and free fluorochrome are removed by size-exclusion chromatography.
Content :	Formulation: Stabilizing phosphate buffered saline (PBS), pH 7.4, 15 mM sodium azide
Storage condition :	Store at 2-8°C. Protect from prolonged exposure to light. Do not freeze.

Application Note

Flow cytometry: The reagent is designed for analysis of human blood cells using 20 µl reagent / 100 µl of whole blood or 10⁶ cells in a suspension. The content of a vial (2 ml) is sufficient for 100 tests.

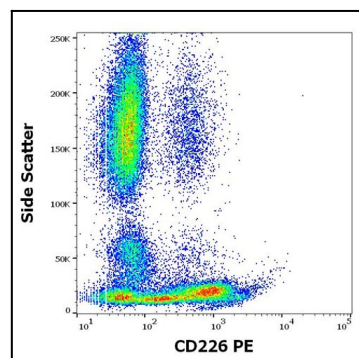


Figure 1:Flow cytometry surface staining pattern of human peripheral whole blood stained using anti-human CD226 (11A8) PE antibody (20 µl reagent / 100 µl of peripheral whole blood).

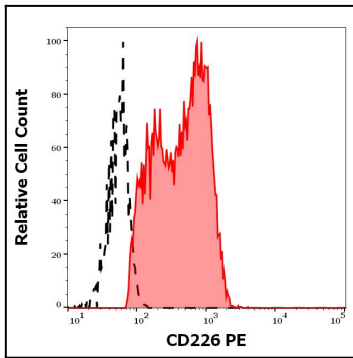


Figure 2: Separation of human CD226 positive lymphocytes (red-filled) from neutrophil granulocytes (black-dashed) in flow cytometry analysis (surface staining) of human peripheral whole blood stained using anti-human CD226 (11A8) PE antibody (20 μ l reagent / 100 μ l of peripheral whole blood).