

## 30-2855AC: APC Conjugated Anti-Human CD354 MAb (Clone: 6B1)

<b>Clonality :</b>	Monoclonal
<b>Clone Name :</b>	6B1
<b>Application :</b>	FACS
<b>Reactivity :</b>	Human
<b>Conjugate :</b>	APC
<b>Gene :</b>	CD354
<b>Gene ID :</b>	54210
<b>Uniprot ID :</b>	Q9NP99
<b>Format :</b>	Purified
<b>Isotype :</b>	Mouse IgG1
<b>Immunogen Information :</b>	recombinant human CD354 fused with IgG

### Description

CD354 (TREM-1), a cell surface glycoprotein expressed mainly on monocytes, macrophages, and neutrophils, but also on e.g. endothelial cells or bronchial epithelium, plays an important role in innate immune responses. Upon triggering by its ligands (mainly bacterial and fungal components, but also some viruses, such as Marburg or Ebola virus), it initiates signaling cascades leading to release of pro-inflammatory cytokines and chemokines. CD354 is strongly present in infectious inflammatory lesions (e.g. in folliculitis or impetigo), but not so much in non-infectious inflammatory lesions, (e.g. vasculitis or psoriasis). However, under certain conditions neutrophils can upregulate CD354 also under non-infectious inflammatory conditions, e.g. in rheumatoid arthritis. Soluble CD354 (sTREM-1) is an important biomarker for identification of septic patients, as well as for prediction of their survival

### Product Info

<b>Amount :</b>	100 tests
<b>Purification :</b>	Purified by protein-A affinity chromatography.
<b>Content :</b>	Formulation: Phosphate buffered saline (PBS), pH 7.4, 15 mM sodium azide
<b>Storage condition :</b>	Store at 2-8°C. Do not freeze.

### Application Note

Flow cytometry: The reagent is designed for analysis of human blood cells using 10 µl reagent / 100 µl of whole blood or 106 cells in a suspension. The content of a vial (1 ml) is sufficient for 100 tests.

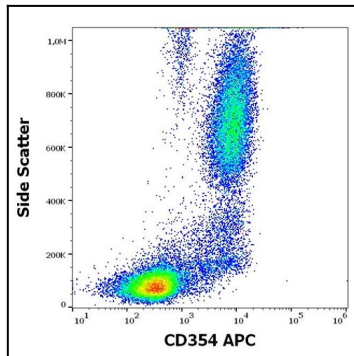


Figure 1: Flow cytometry surface staining pattern of human peripheral whole blood stained using anti-human CD354 (6B1) APC antibody (10  $\mu$ l reagent / 100  $\mu$ l of peripheral whole blood).

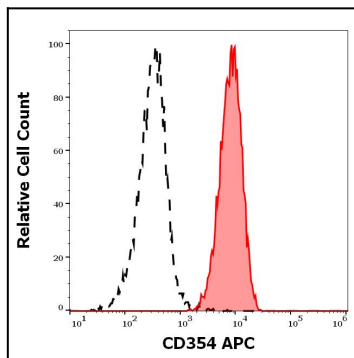


Figure 2: Separation of human neutrophil granulocytes (red-filled) from lymphocytes (black-dashed) in flow cytometry analysis (surface staining) of human peripheral whole blood stained using anti-human CD354 (6B1) APC antibody (10  $\mu$ l reagent / 100  $\mu$ l of peripheral whole blood).