

## 30-2924: Anti-Human CD355 Antibody (Clone : Cr24.1)

<b>Clonality :</b>	Monoclonal
<b>Clone Name :</b>	Cr24.1
<b>Application :</b>	FACS
<b>Reactivity :</b>	Human
<b>Gene ID :</b>	56253
<b>Uniprot ID :</b>	O95727
<b>Format :</b>	Purified
<b>Alternative Name :</b>	CRTAM
<b>Isotype :</b>	Mouse IgG2b
<b>Immunogen Information :</b>	CD355-P815 cells

### Description

CD355 is a homodimerizing type I transmembrane glycoprotein, which binds to its ligand SYNCAM (CADM1). CD355 is expressed on subsets of CD8+ and CD4+ T cells, on activated NK cells and NKT cells. Its expression is transient, and reflects its role in cell adhesion and migration.

The mouse monoclonal antibody Cr24.1 recognizes an extracellular epitope of human CD355, a type I transmembrane glycoprotein, expressed on subsets of CD8+ and CD4+ T cells, on activated NK cells and NKT cells.

### Product Info

<b>Amount :</b>	0.1 mg
<b>Purification :</b>	Purified by protein-A affinity chromatography
<b>Content :</b>	1 mg/ml Formulation : Phosphate buffered saline (PBS) solution with 15 mM sodium azide
<b>Storage condition :</b>	Store at 2-8°C. Do not freeze.

### Application Note

Flow cytometry: Recommended dilution: 3-6 µg/ml

Flow cytometry: Recommended dilution: 3-6 µg/ml

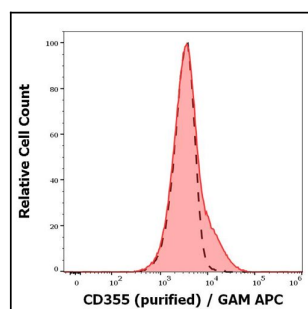


Figure 1: Separation of PMA and ionomycin stimulated human peripheral blood mononuclear cells stained using anti-CD355 (Cr24.1) purified antibody (red-filled) from PMA and ionomycin stimulated human peripheral blood mononuclear cells unstained by primary antibody (GAM APC, black-dashed) in flow cytometry analysis (surface staining).