

30-1453BT: Anti-CD163 Monoclonal Antibody (Clone:GHI/61) Biotin Conjugated

Clonality :	Monoclonal
Clone Name :	GHI/61
Application :	IP,FACS,WB
Reactivity :	Human
Conjugate :	Biotin
Gene :	CD163
Gene ID :	9332
Uniprot ID :	Q86VB7
Alternative Name :	CD163,M130
Isotype :	Mouse IgG1
Immunogen Information :	Hairy cell leukemia cells

Description

CD163, also known as M130, is a member of the scavenger receptor family, accounting for the clearance of hemoglobin-haptoglobin complexes during limited hemolysis, which protects the body, in particular the kidneys, against heme-mediated oxidative damages. It does not have measurable affinity for noncomplexed hemoglobin or haptoglobin. Immunomodulatory role of CD163 has been postulated. CD163 is expressed by cells of the monocyte-macrophage lineage and its extracellular part also circulates in plasma as a soluble protein, especially during sepsis and other conditions affecting macrophage activity, when its level may raise manyfold.

Product Info

Amount :	0.1 mg
Purification :	Purified by protein-A affinity chromatography
Storage condition :	Store at 2-8°C. Do not freeze.

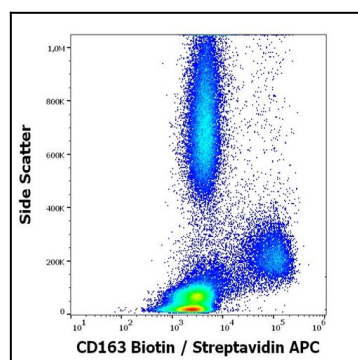


Figure 1: Flow cytometry surface staining pattern of human peripheral whole blood stained using anti-human CD163 (GHI/61) Biotin antibody

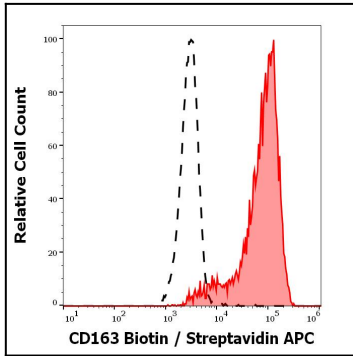


Figure 2: Separation of human monocytes (red-filled) from lymphocytes (black-dashed) in flow cytometry analysis (surface staining) of human peripheral whole blood stained using anti-human CD163 (GHI/61) Biotin antibody