

## 17-4001: Lineage Cocktail Kit

**Application :** FACS

**Reactivity :** Human

**Conjugate :** FITC

### Description

The Lineage Cocktail FITC is designed to stain and gate-out human T lymphocytes (CD3+), B lymphocytes (CD19+CD20+), NK cells (CD16+CD56+), non-differentiated monocytes (CD14+), neutrophils (CD16+), and eosinophils (CD14+<sub>dim</sub>). Peripheral blood dendritic cells and basophils are Lineage negative and do not stain using this reagent. Whenever applicable, the lineage negative cells can be simultaneously stained by other monoclonal antibodies conjugated to appropriate fluorochromes. For example, dendritic cells can be distinguished by positive staining with anti HLA-DR, and basophils by positive staining with anti CD203c.

### Product Info

**Amount :** 50 tests

**Content :**

Antibody cocktail (1 ml, 50 tests) components: Anti human CD3 (clone MEM-57, IgG2a) FITC Anti human CD14 (clone MEM-15, IgG1) Anti human CD16 (clone LNK16, IgG1) Anti human CD19 (clone LT19, IgG1) Anti human CD20 (clone LT20, IgG2a) Anti human CD56 (clone MEM-188, IgG2a) Stabilizing phosphate buffered saline (PBS), pH 7.4, 15 mM sodium azide.

**Storage condition :**

Store at 2-8°C. Protect from prolonged exposure to light. Do not freeze.

### Application Note

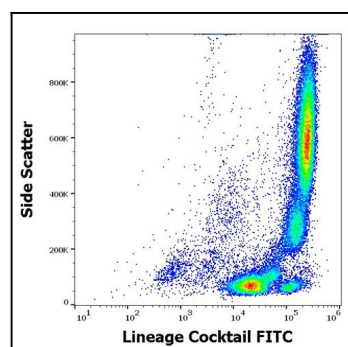


Figure 1: Flow cytometry surface staining pattern of human peripheral whole blood stained using Lineage Cocktail FITC

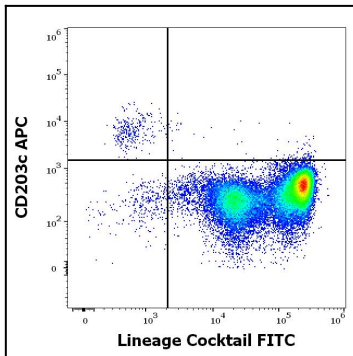


Figure 2: Flow cytometry multicolor surface staining of human peripheral whole blood stained using Lineage Cocktail FITC and anti-human CD203c (NP4D6) APC antibody

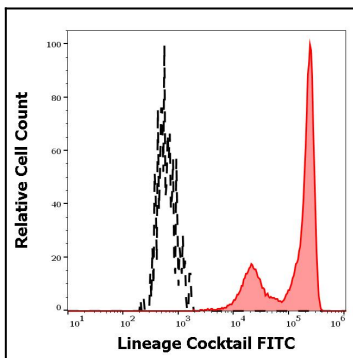


Figure 3: Separation of human target population cells (red-filled) from basophils (black-dashed) in flow cytometry analysis (surface staining) of human peripheral whole blood stained using Lineage Cocktail FITC