

30-1096AF700: Anti-CD7 Monoclonal Antibody (Clone:124-1D1) Alexa Fluor® 700

Clonality :	Monoclonal
Clone Name :	124-1D1
Application :	FACS
Reactivity :	Human
Gene :	CD7
Gene ID :	924
Uniprot ID :	P09564
Format :	Purified
Alternative Name :	CD7
Isotype :	Mouse IgG1
Immunogen Information :	not available

Description

CD7, also known as gp40, is a member of the immunoglobulin superfamily found on T cells, NK cells, thymocytes, hematopoietic progenitors, and monocytes (weakly). CD7 is also expressed on acute lymphocytic leukemia (ALL). CD7 crosslinking induces a calcium flux in T lymphocytes, presumably as a result of cytoplasmic domain association with PI3-kinase. CD7 co-stimulation can induce cytokine secretion and modulate cellular adhesion. A ligand of CD7, epithelial cell secreted protein K12, is produced in thymus to regulate thymocyte signaling and cytokine release. In lung microvascular endothelial cells CD7 serves as an IgM Fc receptor. Expression of CD7 is an important marker used in leukemia diagnostics.

Product Info

Amount :	100 tests
Purification :	Purified by protein-A affinity chromatography
Storage condition :	Store at 2-8°C. Do not freeze.

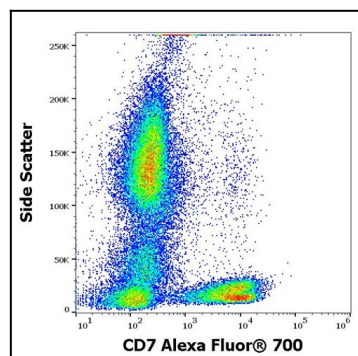


Figure 1: Flow cytometry surface staining pattern of human peripheral whole blood stained using anti-human CD7 (124-1D1) Alexa Fluor® 700 antibody

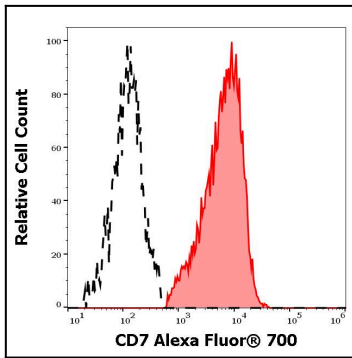


Figure 2: Separation of human CD7 positive lymphocytes (red-filled) from CD7 negative lymphocytes (black-dashed) in flow cytometry analysis (surface staining) of human peripheral whole blood stained using anti-human CD7 (124-1D1) Alexa Fluor® 700 antibody