

## 14-907ACL: GFP/RAW264.7 Stable Cell Line

**Application :** Functional Assay, FACS

### Description

GFP/RAW264.7 Stable Cell Line is a stably transfected RAW264.7 cell line which expresses enhanced green fluorescent protein (eGFP).

### Sequence data: Amino acid sequence of eGFP

```
MVSKGEELFTGVVPILVELDGDVNGHKFSVSGEGEDATYGKLT LK FIC  
TTGKLPVPWPTLVTTLYGVQCFSRYPDHMKQHDFFKSAMPEGYVQE  
RTIFFKDDGNYKTRAEVKFEGDTLVNRIELKGIDFKEDGNILGHKLEYNY  
NSHNVYIMADKQKNGIKVNFKIRHNIEDGSVQLADHYQQNTPIGDGP  
VLLPDNHYLSTQSALS KDPNEKRDH MVLL E FVTAAGITLGMDELYK
```

### Product Info

**Amount :** 1 vial  
**Content :** Each vial contains  $2 \sim 3 \times 10^6$  cells in 1 ml of 90% FBS + 10% DMSO  
**Storage condition :** Immediately upon receipt, store in liquid nitrogen.

### Application Note

#### Application:

- Screen for GFP through Flow Cytometry.
- Screen for GFP through Fluorescence Microscopy.

#### Culture conditions:

Cells should be grown at 37°C with 5% CO<sub>2</sub> using DMEM medium (w/ 2 mM L-Glutamine, 4.5g/L Glucose and 1 mM Sodium Pyruvate) supplemented with 10% heat-inactivated FBS and 1% Pen/Strep, plus 3 µg/ml of Puromycin.

It is recommended to quickly thaw the frozen cells upon receipt or from liquid nitrogen in a 37°C water-bath, transfer to a tube containing 10 ml of growth medium without Puromycin, spin down cells, resuspend cells in pre-warmed growth medium without Puromycin, transfer resuspended cells to T25 flask and culture in 37°C-CO<sub>2</sub> incubator.

Monitor the cell viability by counting cells daily for 1-3 days until cells completely recover viability as cells are doubling daily. Once cells are over 90% confluent, harvest cells by centrifugation and passage cells. At first, switch to growth medium containing puromycin. Cells should be split before they reach complete confluence.

To passage the cells, transfer cells to a tube, spin down cells, resuspend cells and seed appropriate aliquots of cells suspension into new culture vessels. Subcultivation ration = 1:10 to 1:20 weekly. To achieve satisfactory results, cells should not be passaged over 16 times.

**LIMITED USE RESTRICTIONS:**

**THIS PRODUCT IS SOLELY FOR IN VITRO RESEARCH USE ONLY. NOT FOR DIAGNOSTIC OR THERAPEUTIC USE.**

By use of this product, user agrees to be bound by the terms of this limited use statement.

This product is solely for Internal Research Purposes and not for Commercial Purposes. Commercial Purposes include, but are not limited to (1) use of the cell line in manufacturing; (2) use of the cell line to provide a service, information or data; (3) use of the cell line for therapeutic, diagnostic or prophylactic purposes; or (4) resale of the cell line whether or not such cell lines are resold for use in research. The buyer cannot sell, give or otherwise transfer this product to a third party.

Commercial License Agreement is available for non-research use if applicable. Please contact Abeomics ([info@abeomics.com](mailto:info@abeomics.com)).

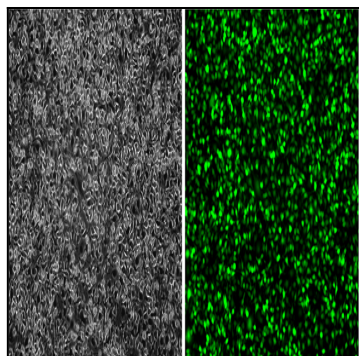


Fig-1: Analysis of the GFP/RAW264.7 stable cell line through fluorescence microscopy. Bright-field image (Left); Fluorescence image (Right).

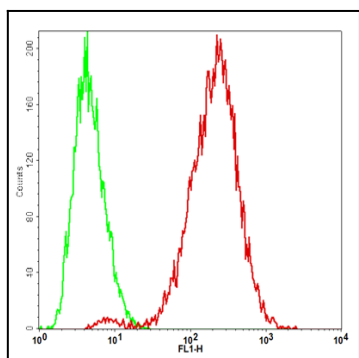


Fig-2: Detection of GFP in the GFP/RAW264.7 stable cell line through flow cytometry . Parental RAW264.7 cells (Green); GFP/RAW264.7 cells (Red).