

## 12-9600: Anti-Canine PD-1(INTERVET 4F12) mAb

**Application :** ELISA  
**Uniprot ID :** NP\_001301026.1  
**Alternative Name :** 4F12  
**Isotype :** IgG

### Product Info

**Amount :** 50µg / 100 µg  
**Content :** Lyophilized from sterile PBS, pH 7.4. Normally 5 % - 8% trehalose is added as protectants before lyophilization. Reconstitute with deionized water.  
**Storage condition :** Store at -20°C to -80°C for 12 months in lyophilized form. After reconstitution, if not intended for use within a month, aliquot and store at -80°C (Avoid repeated freezing and thawing). Lyophilized antibodies are shipped at ambient temperature.

### Application Note

ELISA 1:5000-10000, FACS 1:100

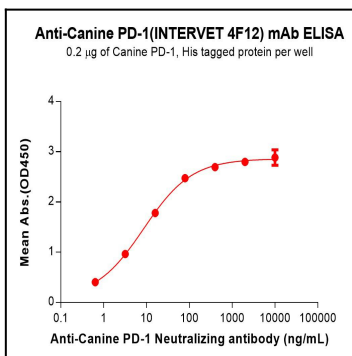


Figure 1. ELISA plate pre-coated by 2 µg/mL (100 µL/well) Canine PD-1 Protein, His Tag can bind Anti-Canine PD-1(INTERVET 4F12) mAb in a linear range of 0.64-80 ng/mL.

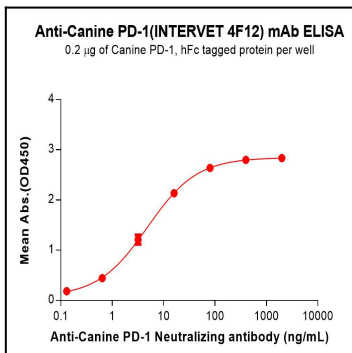


Figure 2. ELISA plate pre-coated by 2 µg/mL (100 µL/well) Canine PD-1 Protein, hFc Tag can bind Anti-Canine PD-1(INTERVET 4F12) mAb in a linear range of 0.64-80 ng/mL.

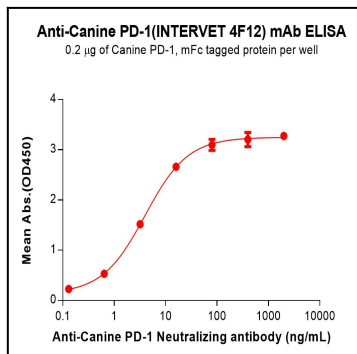


Figure 3. ELISA plate pre-coated by 2 1/4g/mL (100 1/4L/well) Canine PD-1 Protein, mFc Tag can bind Anti-Canine PD-1(INTERVET 4F12) mAb in a linear range of 0.64-80 ng/mL.

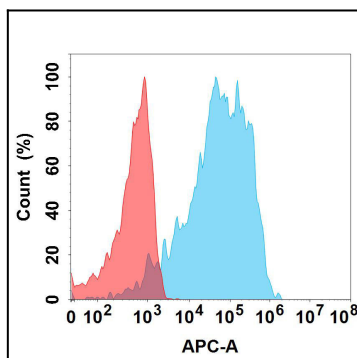


Figure 4. Flow cytometry analysis with 1 1/4g/mL Anti-Canine PD-1(INTERVET 4F12) mAb on Expi293 cells transfected with Canine PD-1 protein (Blue histogram) or Expi293 transfected with irrelevant protein (Red histogram).