

## 12-9524: PE-conjugated Anti-GPRC5D antibody(DM91); Rabbit mAb

<b>Clonality :</b>	Monoclonal
<b>Clone Name :</b>	DM91
<b>Application :</b>	FACS
<b>Reactivity :</b>	Human
<b>Uniprot ID :</b>	Q9NZD1
<b>Alternative Name :</b>	GPRC5D
<b>Isotype :</b>	Rabbit IgG

### Description

Description :PE-conjugated Anti-GPRC5D antibody(DM91); Rabbit mAb

The protein encoded by this gene is a member of the G protein-coupled receptor family; however; the specific function of this gene has not yet been determined.

### Product Info

<b>Amount :</b>	100 Test
<b>Purification :</b>	Purified from cell culture supernatant by affinity chromatography
<b>Content :</b>	Lyophilized from sterile PBS, pH 7.4. Normally 5 % - 8% trehalose is added as protectants before lyophilization. Please see Certificate of Analysis for specific instructions of reconstitution.
<b>Storage condition :</b>	Store at 2°C-8°C for 6 months

### Application Note

FACS 1:100

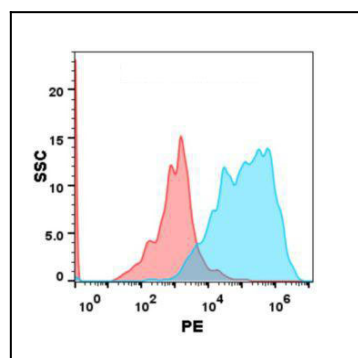


Figure 1. Flow cytometry analysis with 100  $\mu$ L of 1:100 dilution PE-conjugated Anti-GPRC5D(DM91) mAb on Expi293 cells transfected with Human GPRC5D protein (Blue histogram) or Expi293 transfected with irrelevant protein (Red histogram).