

12-9512: Anti-SEZ6 antibody(31A10), IgG1 Chimeric mAb

Clonality :	Monoclonal
Clone Name :	31A10
Application :	FACS
Reactivity :	Human
Uniprot ID :	Q53EL9
Alternative Name :	BSRPC
Isotype :	Rabbit/Human Fc chimeric IgG1

Description

Description :Anti-SEZ6 antibody(31A10), IgG1 Chimeric mAb

The protein encoded by this gene is thought to contain five cysteine-rich motifs that are similar to sushi domains, as well as two domains similar to the amino terminal half of the CUB (for complement C1r/C1s, Uegf, Bmp1) domain. Mutations in this gene have been associated with febrile seizures. [provided by RefSeq, Jul 2016]

Product Info

Amount :	10 µg / 100 µg
Purification :	Purified from cell culture supernatant by affinity chromatography
Content :	Lyophilized from sterile PBS, pH 7.4. Normally 5 % - 8% trehalose is added as protectants before lyophilization. Please see Certificate of Analysis for specific instructions of reconstitution.
Storage condition :	Store at -20°C to -80°C for 12 months in lyophilized form. After reconstitution, if not intended for use within a month, aliquot and store at -80°C (Avoid repeated freezing and thawing). Lyophilized proteins are shipped at ambient temperature.

Application Note

FACS 1/100

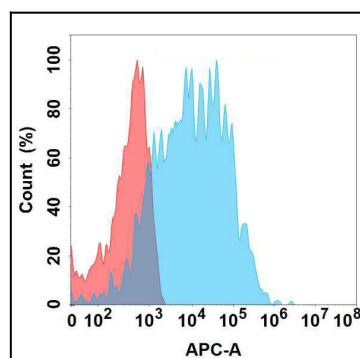


Figure 1. Flow cytometry analysis with 1¹/₄g/mL Anti-SEZ6 (31A10) mAb on Expi293 cells transfected with human SEZ6 (Blue histogram) or Expi293 transfected with irrelevant protein (Red histogram).