

## 12-9506: Anti-DLL3 antibody(67E6), IgG1 Chimeric mAb

<b>Clonality :</b>	Monoclonal
<b>Clone Name :</b>	67E6
<b>Application :</b>	FACS
<b>Reactivity :</b>	Human
<b>Uniprot ID :</b>	Q9NYJ7
<b>Alternative Name :</b>	SCDO1
<b>Isotype :</b>	Rabbit/Human Fc chimeric IgG1

### Description

Description :Anti-DLL3 antibody(67E6), IgG1 Chimeric mAb

This gene encodes a member of the delta protein ligand family. This family functions as Notch ligands that are characterized by a DSL domain, EGF repeats, and a transmembrane domain. Mutations in this gene cause autosomal recessive spondylocostal dysostosis 1. Two transcript variants encoding distinct isoforms have been identified for this gene. [provided by RefSeq, Jul 2008]

### Product Info

<b>Amount :</b>	10 µg / 100 µg
<b>Purification :</b>	Purified from cell culture supernatant by affinity chromatography
<b>Content :</b>	Lyophilized from sterile PBS, pH 7.4. Normally 5 % - 8% trehalose is added as protectants before lyophilization. Please see Certificate of Analysis for specific instructions of reconstitution.
<b>Storage condition :</b>	Store at -20°C to -80°C for 12 months in lyophilized form. After reconstitution, if not intended for use within a month, aliquot and store at -80°C (Avoid repeated freezing and thawing). Lyophilized proteins are shipped at ambient temperature.

### Application Note

FACS 1/100

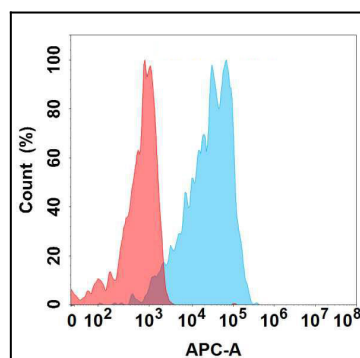


Figure 1. Flow cytometry analysis (Intracellular) with 1 $\frac{1}{4}$ µg/mL Anti-DLL3 (67E6) mAb on Expi293 cells transfected with human DLL3 (Blue histogram) or Expi293 transfected with irrelevant protein (Red histogram).