

12-9503: Anti-CDH3 antibody(6A10); IgG1 Chimeric mAb

Clonality :	Monoclonal
Clone Name :	6A10
Application :	FACS
Reactivity :	Human
Uniprot ID :	P22223
Alternative Name :	CDHP;HJMD;PCAD
Isotype :	Rabbit/Human Fc chimeric IgG1

Description

Description :Anti-CDH3 antibody(6A10); IgG1 Chimeric mAb

This gene encodes a classical cadherin of the cadherin superfamily. Alternative splicing results in multiple transcript variants, at least one of which encodes a preproprotein that is proteolytically processed to generate the mature glycoprotein. This calcium-dependent cell-cell adhesion protein is comprised of five extracellular cadherin repeats, a transmembrane region and a highly conserved cytoplasmic tail. This gene is located in a gene cluster in a region on the long arm of chromosome 16 that is involved in loss of heterozygosity events in breast and prostate cancer. In addition, aberrant expression of this protein is observed in cervical adenocarcinomas. Mutations in this gene are associated with hypotrichosis with juvenile macular dystrophy and ectodermal dysplasia, ectrodactyly, and macular dystrophy syndrome (EEMS). [provided by RefSeq, Nov 2015]

Product Info

Amount :	10 µg / 100 µg
Purification :	Purified from cell culture supernatant by affinity chromatography
Content :	Lyophilized from sterile PBS, pH 7.4. Normally 5 % - 8% trehalose is added as protectants before lyophilization. Please see Certificate of Analysis for specific instructions of reconstitution.
Storage condition :	Store at -20°C to -80°C for 12 months in lyophilized form. After reconstitution, if not intended for use within a month, aliquot and store at -80°C (Avoid repeated freezing and thawing). Lyophilized proteins are shipped at ambient temperature.

Application Note

FACS 1/100

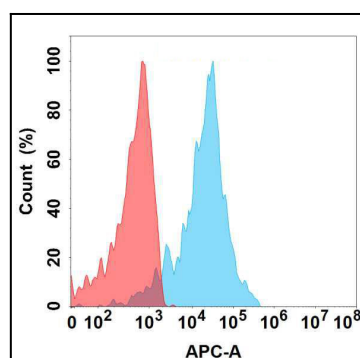


Figure 1. Flow cytometry analysis with Anti-CDH3 (6A10) mAb on Expi293 cells transfected with human CDH3 (Blue histogram) or Expi293 transfected with irrelevant protein (Red histogram).