

12-9501: Anti-CLEC4C antibody(12D6); IgG1 Chimeric mAb

Clonality :	Monoclonal
Clone Name :	12D6
Application :	FACS
Reactivity :	Human
Uniprot ID :	Q8WTT0
Alternative Name :	BDCA-2;CD303
Isotype :	Rabbit/Human Fc chimeric IgG1

Description

Description :Anti-CLEC4C antibody(12D6); IgG1 Chimeric mAb

This gene encodes a member of the C-type lectin/C-type lectin-like domain (CTL/CTLD) superfamily. Members of this family share a common protein fold and have diverse functions, such as cell adhesion, cell-cell signalling, glycoprotein turnover, and roles in inflammation and immune response. The encoded type 2 transmembrane protein may play a role in dendritic cell function. Two transcript variants encoding distinct isoforms have been identified for this gene. [provided by RefSeq, Jul 2008]

Product Info

Amount :	10 µg / 100 µg
Purification :	Purified from cell culture supernatant by affinity chromatography
Content :	Lyophilized from sterile PBS, pH 7.4. Normally 5 % - 8% trehalose is added as protectants before lyophilization. Please see Certificate of Analysis for specific instructions of reconstitution.
Storage condition :	Store at -20°C to -80°C for 12 months in lyophilized form. After reconstitution, if not intended for use within a month, aliquot and store at -80°C (Avoid repeated freezing and thawing). Lyophilized proteins are shipped at ambient temperature.

Application Note

FACS 1/100

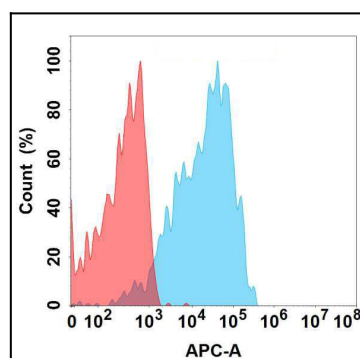


Figure 1. Flow cytometry analysis with Anti-CLEC4C (12D6) mAb on Expi293 cells transfected with human CLEC4C (Blue histogram) or Expi293 transfected with irrelevant protein (Red histogram).