

## 12-9496: Anti-BTN3A2 antibody(3G2); IgG1 Chimeric mAb

<b>Clonality :</b>	Monoclonal
<b>Clone Name :</b>	3G2
<b>Application :</b>	FACS
<b>Reactivity :</b>	Human
<b>Uniprot ID :</b>	P78410
<b>Alternative Name :</b>	BT3.2;BTF4;BTN3.2;CD277
<b>Isotype :</b>	Rabbit/Human Fc chimeric IgG1

### Description

Description :Anti-BTN3A2 antibody(3G2); IgG1 Chimeric mAb

This gene encodes a member of the immunoglobulin superfamily, which resides in the juxta-telomeric region of the major histocompatibility class 1 locus and is clustered with the other family members on chromosome 6. The encoded protein may be involved in the adaptive immune response. Alternatively spliced transcript variants encoding different isoforms have been found for this gene. [provided by RefSeq, Jun 2013]

### Product Info

<b>Amount :</b>	10 µg / 100 µg
<b>Purification :</b>	Purified from cell culture supernatant by affinity chromatography
<b>Content :</b>	Lyophilized from sterile PBS, pH 7.4. Normally 5 % - 8% trehalose is added as protectants before lyophilization. Please see Certificate of Analysis for specific instructions of reconstitution.
<b>Storage condition :</b>	Store at -20°C to -80°C for 12 months in lyophilized form. After reconstitution, if not intended for use within a month, aliquot and store at -80°C (Avoid repeated freezing and thawing). Lyophilized proteins are shipped at ambient temperature.

### Application Note

FACS 1/100

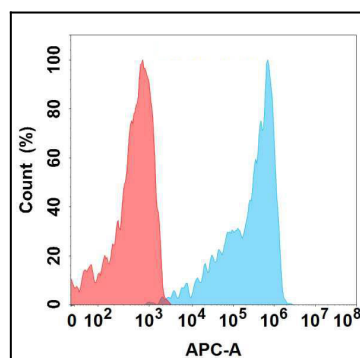


Figure 1. Flow cytometry analysis with Anti-BTN3A2 (3G2) mAb on Expi293 cells transfected with human BTN3A2 (Blue histogram) or Expi293 transfected with irrelevant protein (Red histogram).