

12-9492: Anti-GPC1 antibody(1B8); IgG1 Chimeric mAb

Clonality :	Monoclonal
Clone Name :	1B8
Application :	FACS
Reactivity :	Human
Uniprot ID :	P35052
Alternative Name :	Glypican 1;PC1
Isotype :	Rabbit/Human Fc chimeric IgG1

Description

Description :Anti-GPC1 antibody(1B8); IgG1 Chimeric mAb

Cell surface heparan sulfate proteoglycans are composed of a membrane-associated protein core substituted with a variable number of heparan sulfate chains. Members of the glypican-related integral membrane proteoglycan family (GRIPS) contain a core protein anchored to the cytoplasmic membrane via a glycosyl phosphatidylinositol linkage. These proteins may play a role in the control of cell division and growth regulation. [provided by RefSeq, Jul 2008]

Product Info

Amount :	10 µg / 100 µg
Purification :	Purified from cell culture supernatant by affinity chromatography
Content :	Lyophilized from sterile PBS, pH 7.4. Normally 5 % - 8% trehalose is added as protectants before lyophilization. Please see Certificate of Analysis for specific instructions of reconstitution.
Storage condition :	Store at -20°C to -80°C for 12 months in lyophilized form. After reconstitution, if not intended for use within a month, aliquot and store at -80°C (Avoid repeated freezing and thawing). Lyophilized proteins are shipped at ambient temperature.

Application Note

FACS 1/100

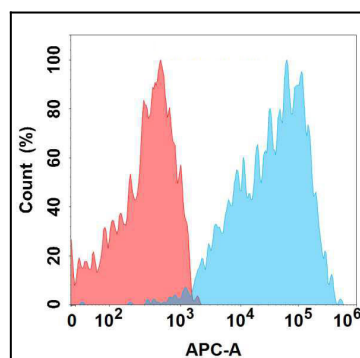


Figure 1. Flow cytometry analysis with Anti-GPC1 (1B8) mAb on Expi293 cells transfected with human GPC1 (Blue histogram) or Expi293 transfected with irrelevant protein (Red histogram).