

12-9491: Anti-CCR5 antibody(4F6); IgG1 Chimeric mAb

Clonality :	Monoclonal
Clone Name :	4F6
Application :	FACS
Reactivity :	Human
Uniprot ID :	P51681
Alternative Name :	CC-CKR-5;CCCKR5;CCR-5;CD195;CKR-5;CKR5;CMKBR5;IDDM22
Isotype :	Rabbit/Human Fc chimeric IgG1

Description

Description :Anti-CCR5 antibody(4F6); IgG1 Chimeric mAb

This gene encodes a member of the beta chemokine receptor family, which is predicted to be a seven transmembrane protein similar to G protein-coupled receptors. This protein is expressed by T cells and macrophages, and is known to be an important co-receptor for macrophage-tropic virus, including HIV, to enter host cells. Defective alleles of this gene have been associated with the HIV infection resistance. The ligands of this receptor include monocyte chemoattractant protein 2 (MCP-2), macrophage inflammatory protein 1 alpha (MIP-1 alpha), macrophage inflammatory protein 1 beta (MIP-1 beta) and regulated on activation normal T expressed and secreted protein (RANTES). Expression of this gene was also detected in a promyeloblastic cell line, suggesting that this protein may play a role in granulocyte lineage proliferation and differentiation. This gene is located at the chemokine receptor gene cluster region. An allelic polymorphism in this gene results in both functional and non-functional alleles; the reference genome represents the functional allele. Two transcript variants encoding the same protein have been found for this gene. [provided by RefSeq, Jul 2015]

Product Info

Amount :	10 µg / 100 µg
Purification :	Purified from cell culture supernatant by affinity chromatography
Content :	Lyophilized from sterile PBS, pH 7.4. Normally 5 % - 8% trehalose is added as protectants before lyophilization. Please see Certificate of Analysis for specific instructions of reconstitution.
Storage condition :	Store at -20°C to -80°C for 12 months in lyophilized form. After reconstitution, if not intended for use within a month, aliquot and store at -80°C (Avoid repeated freezing and thawing). Lyophilized proteins are shipped at ambient temperature.

Application Note

FACS 1/100

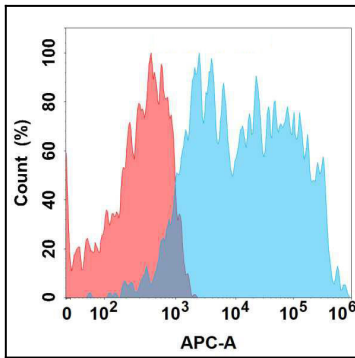


Figure 1. Flow cytometry analysis with Anti-CCR5 (4F6) mAb on Expi293 cells transfected with human CCR5 (Blue histogram) or Expi293 transfected with irrelevant protein (Red histogram).